

CD RECEIVER

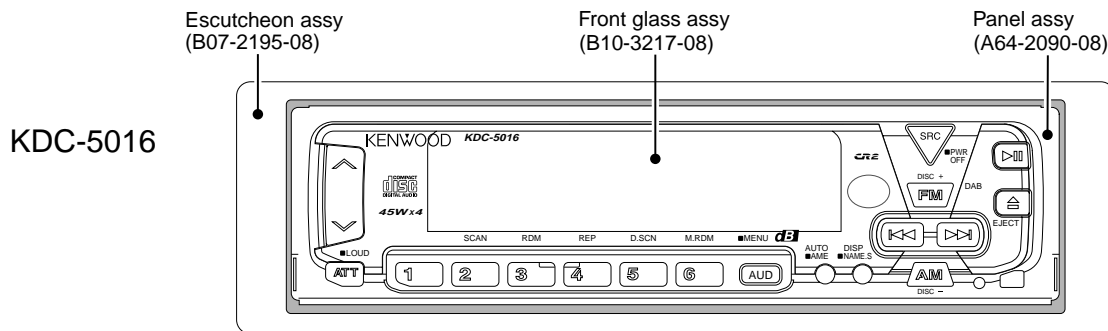
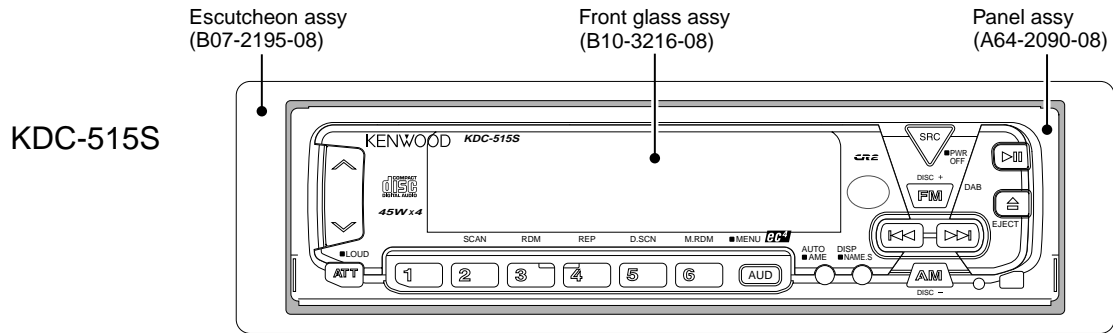
# KDC-5016,515S

## SERVICE MANUAL

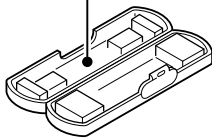
# KENWOOD

© 2000-2 PRINTED IN JAPAN  
B51-7594-00 (N) 1792

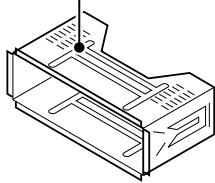
Extension cord	Parts No.
CD mechanism(22P)	W05-0618-00



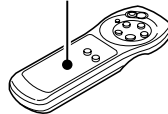
Plastic cabinet assy (A02-1494-08)



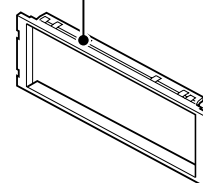
Mounting hardware assy (J21-9585-08)



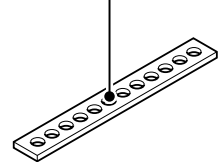
Remote controller assy (A70-0883-05)  
:KDC-5016



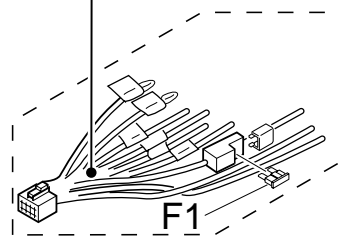
Escutcheon(J CAR) (B07-2186-08)



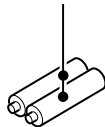
Stay (J54-0611-08)



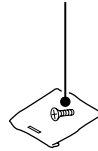
DC cord (E30-4870-08)



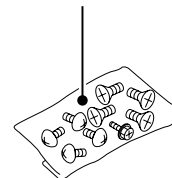
Battery(size:AAA)  
Not supplied as service parts



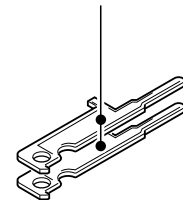
Screw set (N99-1688-08)



Screw set (N99-1689-08)



Lever (D10-4514-08)x2



The MECHANISM OPERATION DESCRIPTION is the same as model KDC-S3007 and KDC-5050RG. Please refer to the service manual for model KDC-S3007(B51-7029-00) or KDC-5050RG(B51-7099-00).



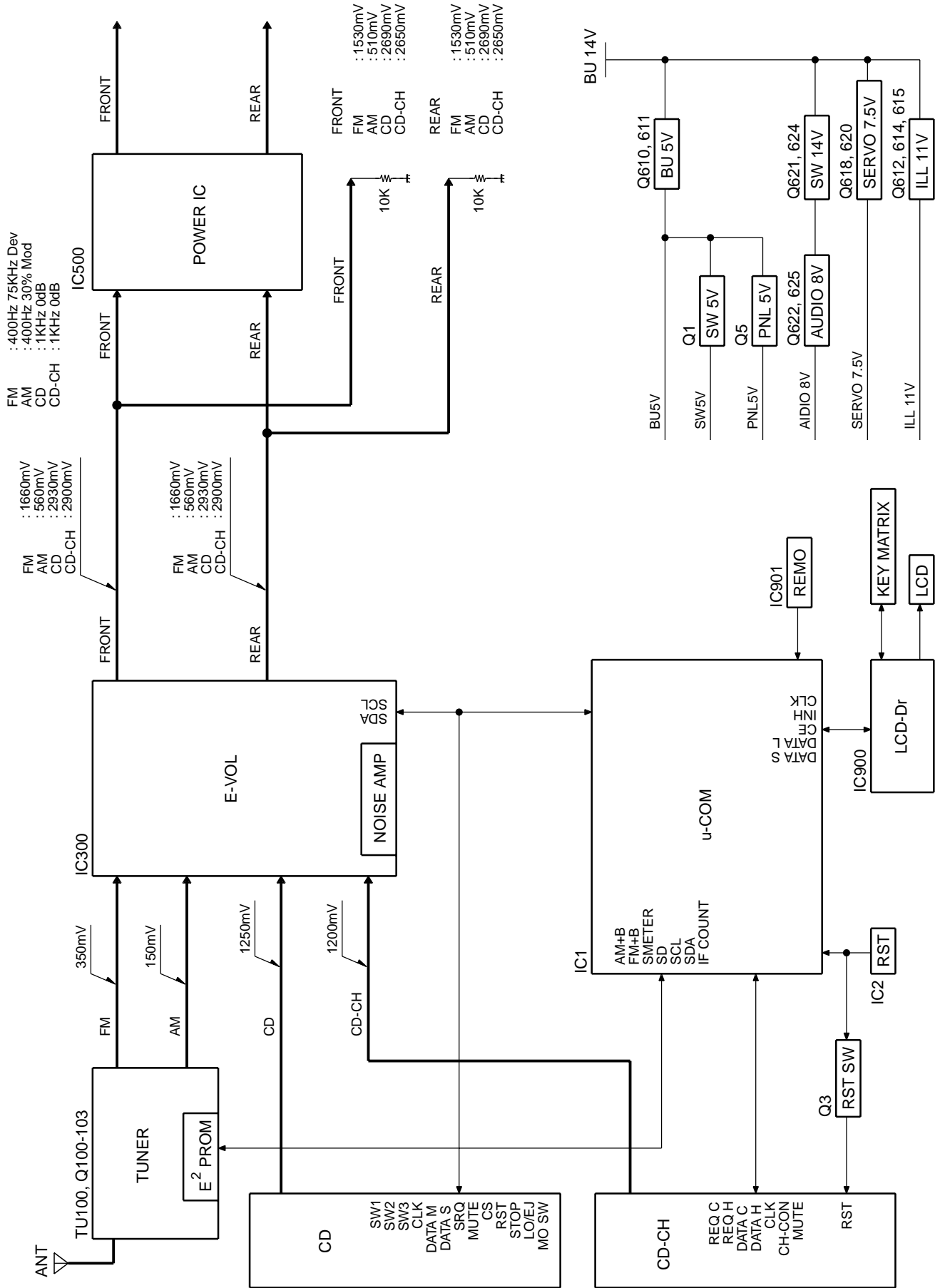
# KDC-5016,515S

## CONTENTS

- BLOCK DIAGRAM ..... 3
- COMPONENTS DESCRIPTION ..... 4
- MICROCOMPUTER'S TERMINAL DESCRIPTION ..... 6
- TEST MODE ..... 8
- ATTENTION ..... 9
- PC BORD ..... 10
- SCHEMATIC DIAGRAM ..... 17
- EXPLODED VIEW ..... 25
- PARTS LIST ..... 27
- SPECIFICATIONS ..... 34

# KDC-5016,515S

## BLOCK DIAGRAM



# KDC-5016,515S

## COMPONENTS DESCRIPTION

### ●MAIN UNIT

Ref.No.	Component Name	Application/Function	Operation/Condition/Compatibility
IC1	784217AGF505	System MI-COM.	
IC2	S-80830ANNP	Reset IC	"Lo": Detection voltage below 3.0V
IC3	HD74HC27FP	Mute logic	3 input NOR gate x3
IC300	TDA7400D	E-VOL. & N.C. MPX	
IC500	TDA7386	Power IC	
Q1	2SA1576A	SW 5V	ON when the base goes "Lo".
Q2	DTA124EUA	Mute driver for Audio mute SW	ON when the base goes "Lo".
Q3	DTA144EUA	Changer reset SW	ON when the base goes "Lo".
Q5	2SA1576A	Panel 5V SW	ON when the base goes "Lo" during the panel not detached.
Q100	2SA1703-AN	FM+B SW	Q100 is turned ON when Q101's base goes "Hi".
Q101	DTC144EUA		ON during FM reception.
Q102	2SA1703-AN	AM+B SW	Q102 is turned ON when Q103's base goes "Hi".
Q103	DTC144EUA		ON during AM reception.
Q303	DTC144EUA	E-VOL. mute SW	E-VOL. is muted when the base goes "Hi".
Q350A,B	DTC343TK	Audio mute SW	Audio pre-outs are muted when the base goes "Hi"
Q351A,B	DTC343TK	Audio mute SW	Audio pre-outs are muted when the base goes "Hi"
Q500	DTC114YUA	SVR SW	POWER IC RESET is activated when the base goes "Hi".
Q600	2SC4081	BU detection(Momentary power down detection)	ON when the base goes "Hi" during BU applied.
Q601	2SC4081	ACC detection	ON when the base goes "Hi" during ACC applied.
Q602	2SA1703-AN	P ANT SW	Q602 is turned ON when Q603's base goes "Hi".
Q603	DTC114YUA		ON during AM/FM reception.
Q604	2SA1703-AN	P CON SW	Q604 is turned ON when Q607's base goes "Hi".
Q607	DTC114EUA		ON during POWER ON mode except ALL OFF mode.
Q605	2SA1576A	P CON protection	Protect Q604 by turning ON when P-CON output is grounded.
Q606	DTA124EUA		Prevents Q605 tuning ON during start-up after power ON.
Q610	2SB1565(E,F)	BU 5V AVR	Inverted darlington connection.
Q611	2SC4081		ON during BU applied.
Q612	2SD1760	Illumination AVR	ON when the base goes "Hi".
Q614	DTA124EUA	Illumination AVR SW	Q614 is turned ON when Q615's base goes "Hi".
Q615	DTC124EUA		
Q618	2SB1565(E,F)	Servo AVR	Inverted darlington connection.
Q620	2SC4081		Q618 is turned ON when Q620's base goes "Hi".
Q621	DTA124EUA	SW 14V	Audio 8V AVR and Servo AVR ON/OFF control.
Q624	DTC144EUA		Q621 is turned ON when Q624's base goes "Hi".
Q622	2SB1565(E,F)	Audio 8V AVR	Inverted darlington connection.
Q625	2SC4081		Q622 is turned ON when Q625's base goes "Hi".

### ●CONTROL UNIT

Ref.No.	Component Name	Application/Function	Operation/Condition/Compatibility
IC900	LC75883E	LCD driver with key-matrix	
IC901	RS-171	Remote control IC	
Q900	DTA124EUA	Remote SW	ON when the base goes "Lo".
Q903	DTA124EUA	Key-matrix permission SW	ON when the base goes "Lo".

# KDC-5016,515S

## COMPONENTS DESCRIPTION

### ●CD PLAYER UNIT(X32-4700-00)

Ref.No.	Component Name	Application/Function	Operation/Condition/Compatibility
IC1	AN8806SB	RF amplifier	Generation of RF signal based on the signals from the APC circuit and pickup, and generation of servo error(focusing error and tracking error)signals. Detection of dropout, anti-shock, track crossing and off-track conditions.
IC2	MN662774KC3	CD signal processor built-in MI-COM	Focusing, tracking, sled and spindle servo processing. Automatic adjustment(focusing, tracking, gain, offset and balance)operations. Digital signal processing(DSP, PLL, sub-codes, CIRC error correction, audio data interpolation)operations.
IC4	BA5917AFP	BTL driver	Focusing coil, tracking coil, spindle motor and sled motor driver
IC5	TA78L05F	5V AVR	
IC6	NJM4565MD	Low pass filter	
Q1	2SB1188	APC	LD power control
Q2	DTC124EUA	P ON SW	ON during the CD source selected.
Q3	2SA1362(Y)	A.8V SW	A8V line ON/OFF control
Q4	2SA1362(Y)	D.5V SW	D5V line ON/OFF control
Q5	DTC124EUA	MOTOR ON SW	ON during CD loading or eject action .
Q8	DTC124EUA	GAIN CONTROL SW	

# KDC-5016,515S

## MICROCOMPUTER'S TERMINAL DESCRIPTION

### ●Terminal description

PinNo.	Pin name	I/O	Description	Processing Operation
1	ST TYPE1	I	IC2 setting terminal	Lo: Initial value
2	ST TYPE2	I	IC2 setting terminal	Lo: Initial value
3	JS TYPE1	I	Genuine/After market distinction terminal	Hi: Genuine, "Lo": After market
4	TYPE1	I	Destination type input terminal 1	
5	TYPE2	I	Destination type input terminal 2	
6	TYPE3	I	Destination type input terminal 3	
7	NC	O	Not used	
8	NC	O	Not used	
9	VDD	-	Power supply connection terminal	Connected to BU 5V lines.
10	NC	O	Not used	
11	NC	O	Not used	
12	NC	O	Not used	
13	RDS DATA	I	Data input from the RDS decoder IC	
14	RDS QUAL	I	Quality input from the RDS decoder IC	
15	AFC	O	AFC control output	Hi: During FM reception, "Lo": During FM seek.
16	FM/AM SD	I	SD input from the tuner pack	Hi: Station detected, "Lo": Not detected
17	IF COUNT	I	Not used	
18	NC	O	Not used	
19	REMO	I	Data input from the remote control light sensor	
20	AM+B	O	AM+B control	Hi: During AM reception.
21	FM+B	O	FM+B control	Hi: During FM reception.
22	TEST	-	IC test terminal(Not used)	Connected to GND
23	IC2 SDA	I/O	Data input/output with the E-VOL. IC	
24	IC2 SCK	O	Clock output to the E-VOL. IC	
25	MUTE	O	Mute control output	Hi: Mute ON, "Lo": Mute OFF
26	SW5V	O	SW 5V control output	Lo: POWER ON mode or during CD loading or eject action.
27	F/E DATA	I/O	Data input/output with the front end	
28	F/E CLK	O	Clock output to the front end	
29	CH CON	O	Changer control	Hi: ON, "Lo": Standby
30	CH REQH	O	Request output to changers	Lo: Request
31	CD MUTE	I	Muting request from the MI-COM. of CD mecha.	Lo: Mute request
32	CD MRST	O	Reset output to the MI-COM. of CD mecha.	Lo: Reset
33	CD MSTOP	O	Stop request to the MI-COM. of CD mecha.	Lo: Stop
34	CD LO/EJ	I/O	CD mecha. loading/Eject switching output	Lo: Loading, "Hi": Eject, "Hi-Z": Stop
35	CD LMON	O	CD mechanism loading motor control output	Hi: CD loading or eject action, "Lo": other
36	CD SW3	I	Down & limit switch detection input	Hi: Chucking, "Lo": Pickup most inner position
37	VDD	-	Power supply connection terminal	Connected to BU 5V lines.
38	X2	-	Main clock resonator connection terminal	
39	X1	-	Main clock resonator connection terminal	
40	VSS	-	Ground connection terminal	Connected to GND.
41	XT2	-	Sub clock resonator connection terminal	
42	XT1	-	Sub clock resonator connection terminal	
43	RESET	I	Reset input terminal	Lo: System reset
44	NC	O	Not used	
45	RDS CLK	I	Clock input from the RDS decoder IC	
46	CH REQC	I	Request input from changers	Lo: Request
47	LCD DATAL	I	Data input from the LCD driver IC	
48	CD SW2	I	12cm disc detection terminal	When 12cm disc was detected, the input becomes "Lo" temporarily.
49	CD SW1	I	Loading detection	Lo: CD chucking.
50	NC	O	Not used	
51	AVDD	-	A/D converter power supply connection terminal	Connected to BU 5V lines.

# KDC-5016,515S

## MICROCOMPUTER'S TERMINAL DESCRIPTION

PinNo.	Pin name	I/O	Description	Processing Operation
52	AVREF0	-	A/D converter reference voltage input terminal	Connected to BU 5V lines.
53	PHONE	I	PHONE detection input	1V or less: TEL MUTE, 2.5V or greater: NAVI MUTE
54	NC	I	Not used	Pull down to GND.
55	NOISE	I	Noise detection input	
56	S-METER	I	S-meter input from the front end	
57	NC	I	Not used	Pull down to GND.
58	NC	I	Not used	Pull down to GND.
59	NC	I	Not used	Pull down to GND.
60	NC	I	Not used	Pull down to GND.
61	AVSS	-	A/D, D/A converter ground connection terminal	Connected to GND.
62	NC	O	Not used	
63	NC	O	Not used	
64	AVREF1	-	D/A converter reference voltage input terminal	
65	CH DATAC	I	Data input from changers	
66	CH-DATAH	O	Data output to changers	
67	CH CLK	I/O	Clock input/output with changers	
68	LCD DATAL	I	Data input from the LCD driver IC	
69	LCD DATAS	O	Data output to the LCD driver IC	
70	LCD CLK	O	Clock output to the LCD driver IC	
71	NC	O	Not used	
72	BEEP	O	BEEP sound output	
73	NC	O	Not used	
74	PNL DET1	I	Panel detaching detection input	Hi: Panel detached.
75	NC	O	Not used	
76	LCD INH	O	INH output to the LCD driver IC	Lo: LCD indication OFF.
77	LCD CE	O	CE output to the LCD driver IC	Hi: Active
78	SRT SW1	I	SRT position detection input	Panel: (SW1, SW2)=(Hi, Hi) Slide : (SW1, SW2)=(Hi, Lo)
79	SRT SW2	I	SRT position detection input	Mask : (SW1, SW2)=(Lo, Lo)
80	NC	O	Not used	
81	NC	O	Not used	
82	NC	O	Not used	
83	NC	O	Not used	
84	NC	O	Not used	
85	NC	O	Not used	
86	NC	O	Not used	
87	AMP SVR	O	Power IC reset output	When the momentary power down, after ACC OFF is detected and after POWER OFF, the output goes "Hi" temporarily.
88	AMP STBY	O	Power IC standby control output	Hi: POWER ON mode
89	AMP MUTE	O	Power IC mute control output	Lo: Mute
90	NC	O	Not used	
91	ILL ON	O	Illumination AVR ON/OFF control output	Hi: AVR ON
92	P ON	O	Microprocessor peripheral power supply control output	Hi: ACC ON or during CD loading or eject action.
93	SMALL	I	Small lights detection input	Lo: During vehicle small lamps turn on.
94	P ANT	O	Antenna control output	Hi: During FM/AM reception.
95	P CONT	O	Power control output	Hi: POWER ON mode except ALL OFF mode.
96	ACC DET	I	ACC detection input	Hi: ACC OFF, "Lo": ACC ON
97	BU DET	I	Momentary power down detection input	Hi: When momentary power down detected or BU OFF, "Lo": BU ON
98	AMP CONT	O	External amp. control output	
99	NC	O	Not used	
100	VSS	-	Ground connection terminal	Connected to GND.

# KDC-5016,515S

## TEST MODE

### •TEST MODE SPECIFICATIONS

#### (1) How to enter the test mode

While holding the FM and Preset 6 keys simultaneously, reset the unit.

All indicators and display segments are ON at the start of test mode.

#### (2) How to exit from the test mode

Reset the unit.

(Note) The test mode cannot be canceled by turning Acc OFF, power OFF or momentary power down.

#### (3) Test mode specifications of the CD receiver

Each press of the Track Up key jumps to the following tracks.

No. 9 ⇒ No. 15 ⇒ No. 10 ⇒ No. 11 ⇒ No. 12 ⇒ No.13  
⇒ No. 14 ⇒ No. 9 (return to beginning)

Pressing the Track Down key jumps to the previous track to the track being played.

#### (4) Audio

- The volume is -10 dB (displayed as 30).
- LOUD is OFF, and CRSC is also OFF whether the function is provided or not.
- With the Bass/Treble and Balance/Fader controls, pressing the Up/Down key switch the setting alternately to:  
Full Boost ⇒ Full Cut ⇒ Full Boost, Full Right ⇒ Full Left ⇒ Full Right, or Full Front ⇒ Full Rear ⇒ Full Front.
- With the high-pass filter, pressing the Up key sets it to Through/100 Hz/200 Hz and pressing the Down key sets it to 200 Hz/100 Hz/Through.
- Other adjustments function in the same way as normal mode.

#### (5) Backup current measurement

When the unit is reset (backup turned on) while Acc is OFF or when Acc is turned OFF in test mode, the MUTE terminal goes on in 2 seconds, instead of 1.5 second. (The panel, CD, C and MD mechanisms are not activated at this time.)

#### (6) Security code registration after E2PROM replacement servicing (E/M type only)

1. Enter the test mode. (See (1) How to enter the test mode.)

2. Press the SRC key to set All OFF.

3. Press and hold the AUDIO key for 1 second to enter menu mode.

4. Press the FM/AM key to select "SECURITY".

5. Press and hold the Track Up/Down for 2 seconds.

6. Enter the code by pressing the Preset 1, 2, 3 and 4 keys.

Example: To enter "3510",

• Press the Preset 1 key 4 times.

• Press the Preset 2 key 6 times.

• Press the Preset 3 key 2 times.

• Press the Preset 4 key once.

7. Press and hold the DISPLAY key for 3 seconds to display "APPROVED".

8. Quit the test mode (See (2) How to exit from the test mode.)

#### (7) How to clear the simple security code (K type only)

1. While the code is requested, press and hold the DISP key and press and hold the VOL Up key for 3 seconds.

("....."disappears.)

2. Enter "KCAR" from the remote control unit. (Same operation as the '98 model)

• Press numeric key 5 twice then press the Track Up key. (This enters "K".)

• Press numeric key 2 three times then press the Track Up key. (This enters "A".)

• Press numeric key 2 once then press the Track Up key. (This enters "A".)

• Press numeric key 7 twice then press the Track Up key. (This enters "A".)

3. The security is canceled and the unit enters the TUNER mode.

#### (8) Other

• The DNPP/SBF key of the remote control unit (RC-510) functions as the menu mode ON/OFF key.

• The OPEN/CLOSE key of the remote control unit (RC-510) functions as the audio adjustment mode ON/OFF key.

• The menu is displayed by displaying only the required features.

• Message such as "CODE OFF" is not displayed when power is turned ON.

• The contrast can be adjusted only to 0/5/10 using the Up/Down keys.



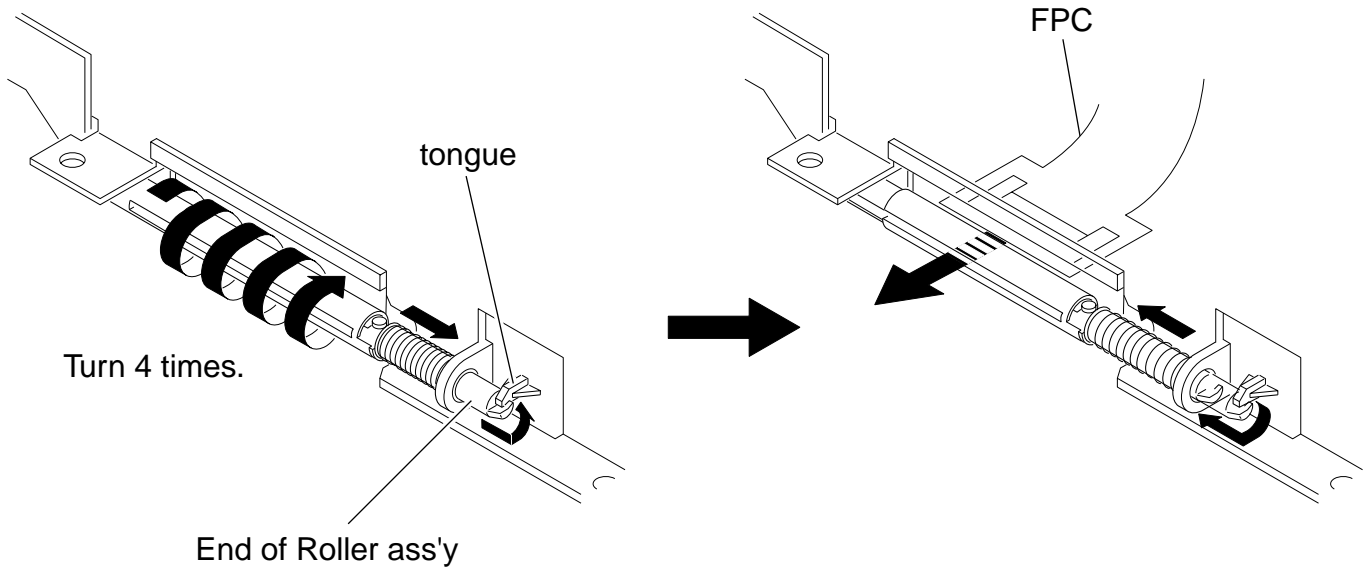
## ATTENTION

### Assembly of FPC(Flexible PC board) onto Roller ass'y

Turn Roller ass'y by 4 times.

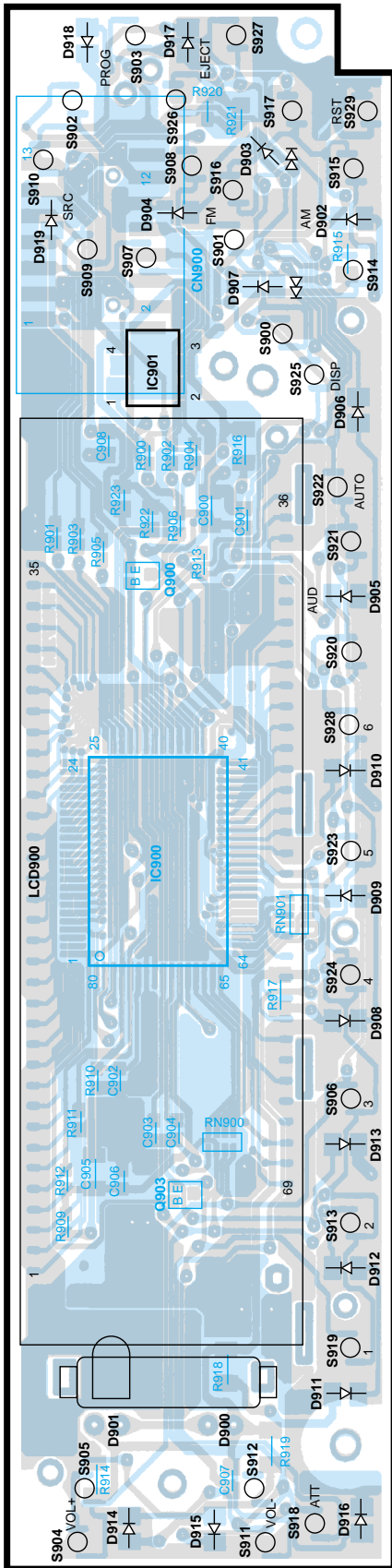
Hook the end of Roller ass'y to the tongue.

Insert the FPC into the slit of Roller ass'y then release the end of Roller ass'y and the tongue.



# PC BOARD (COMPONENT SIDE VIEW)

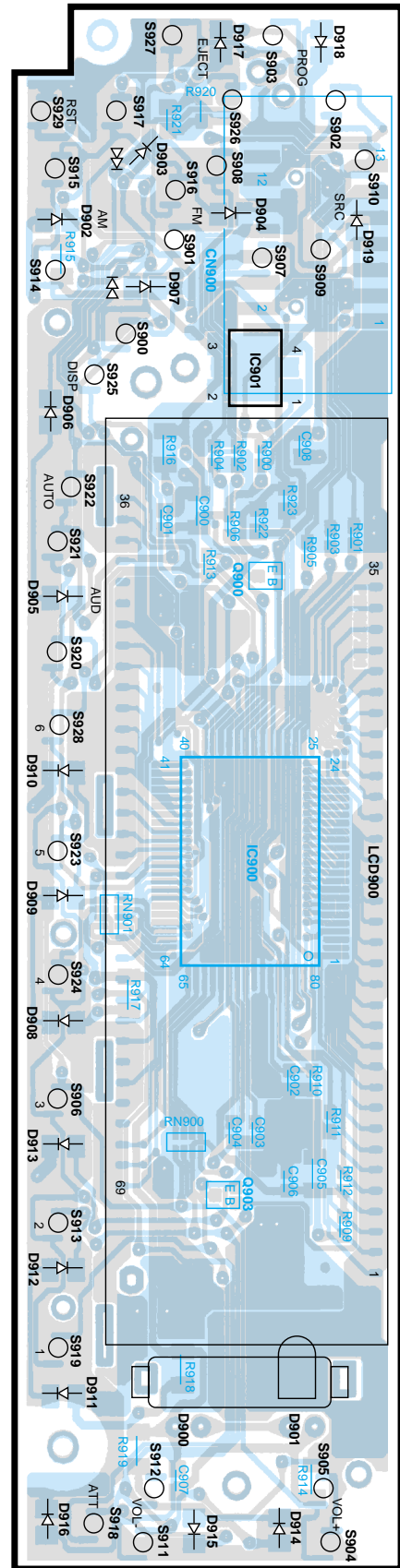
CONTROL UNIT



IC	Q	address
900	4B	
901	3B	
	3B	
	903	

# PC BOARD (FOIL SIDE VIEW)

CONTROL UNIT

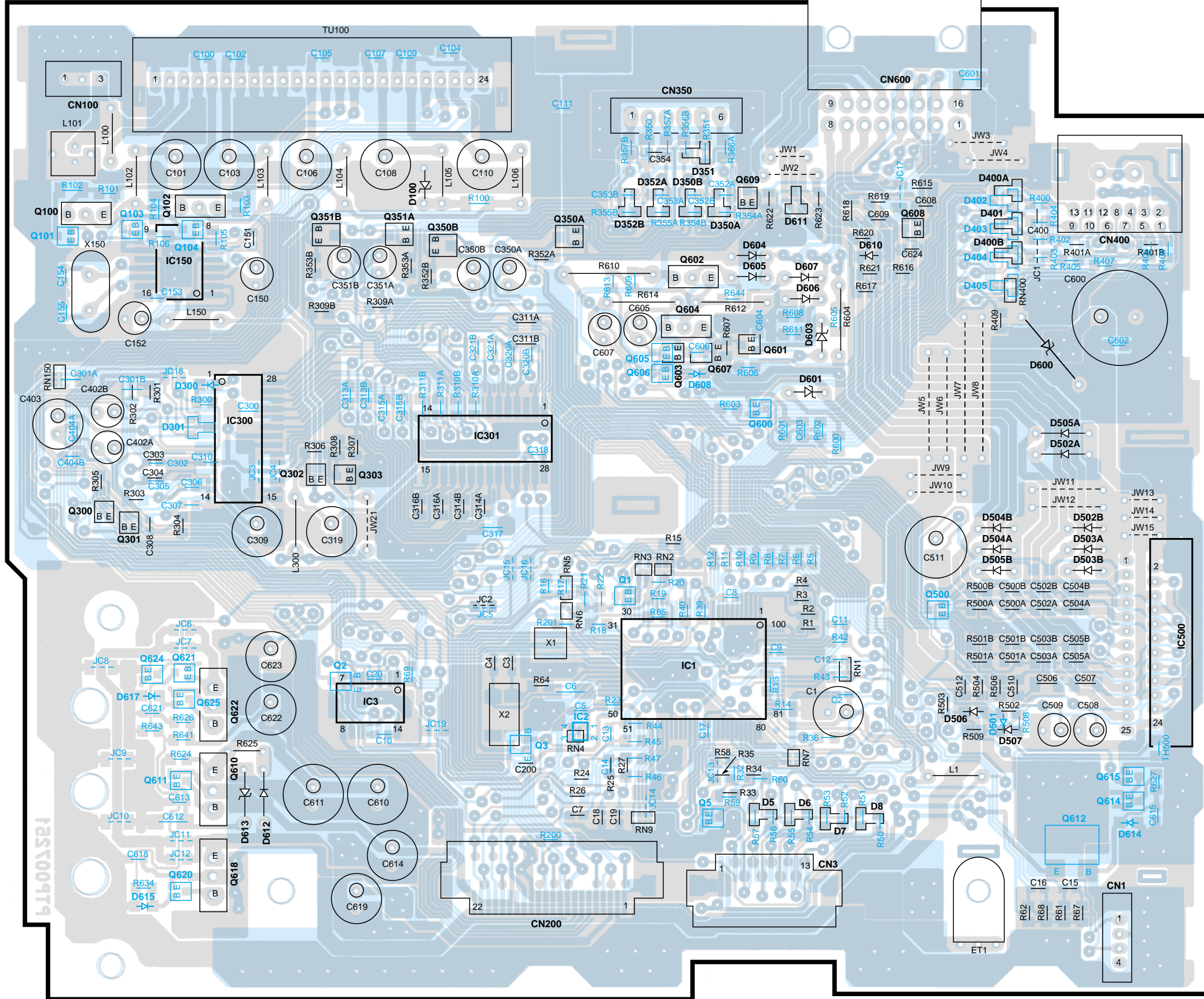


IC	Q	address
900	4D	
901	3D	
	3D	
	903	

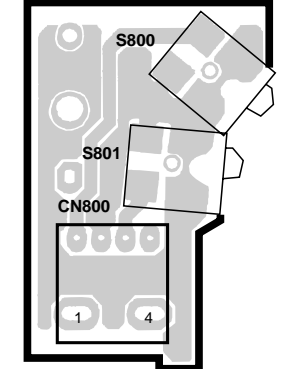
10 Refer to the schematic diagram for the values of resistors and capacitors.

# PC BOARD (COMPONENT SIDE VIEW)

MAIN UNIT



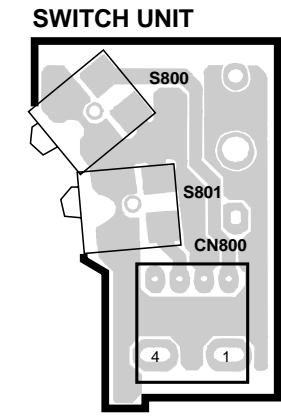
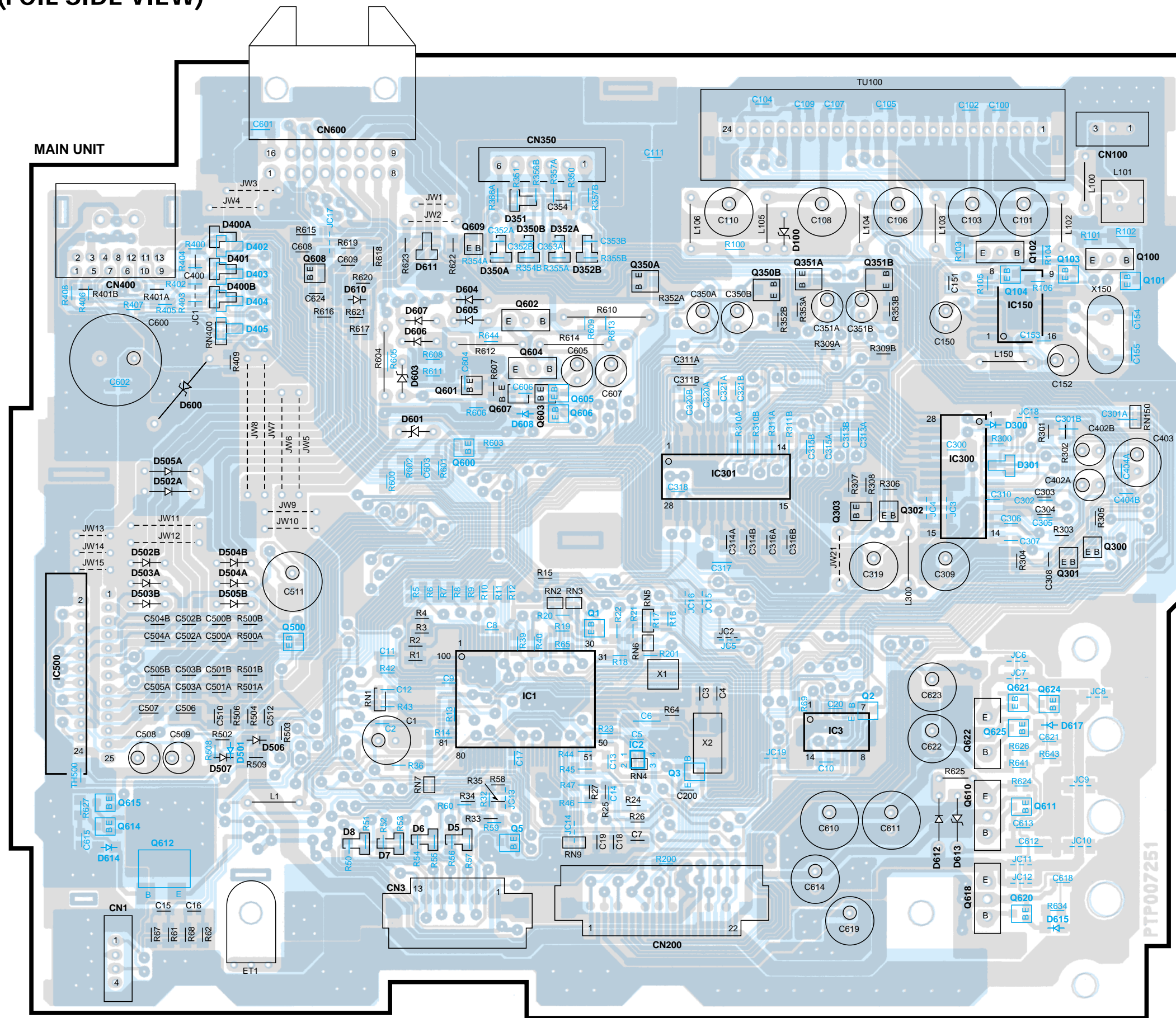
SWITCH UNIT



IC	Q	address
1		5K
2		5J
3		5I
300		4H
500		5N
	1	5J
	2	5I
	3	6J
	5	6K
100		3G
101		3G
102		2H
103		3G
303		4I
350A		3J
350B		3I
351A		3I
351B		3I
500		5L
600		4K
601		3K
602		3K
603		3K
604		3K
605		3K
606		3K
607		3K
610		6H
611		6H
612		6M
614		6M
615		6M
618		6H
620		6H
621		5H
622		5H
624		5H
625		5H



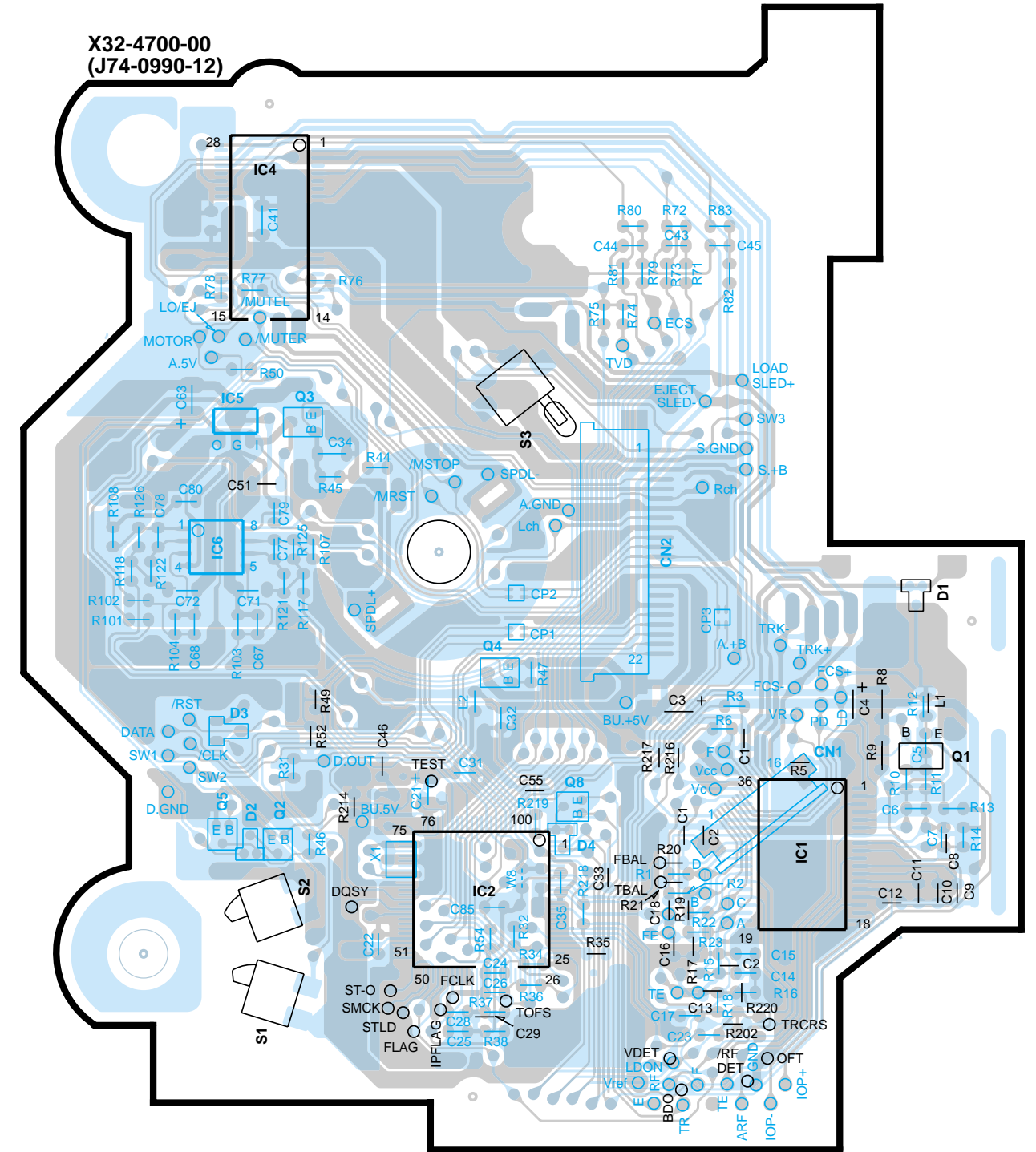
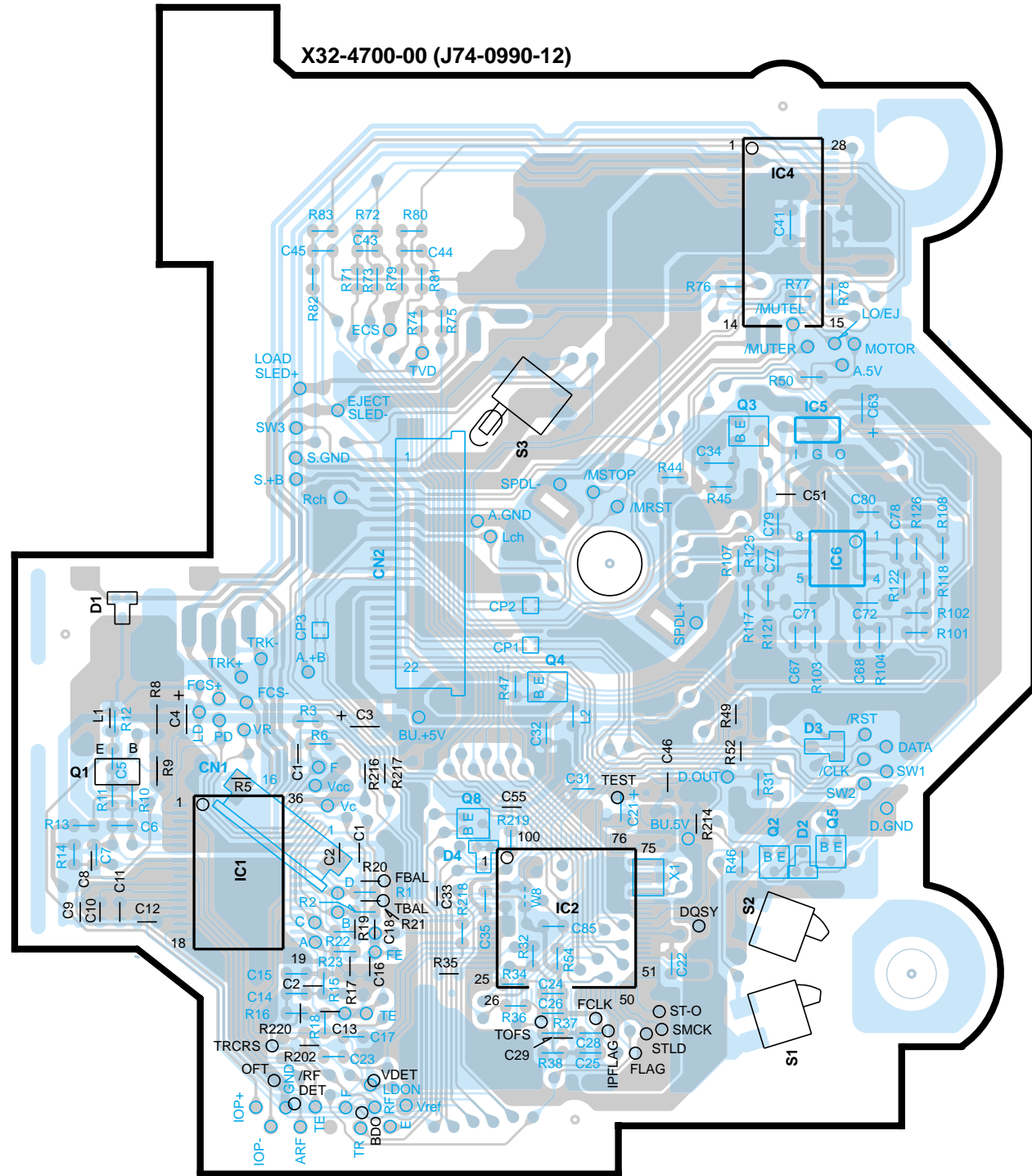
# PC BOARD (FOIL SIDE VIEW)



IC	Q	address
1		5T
2		5T
3		5V
300		4V
500		5Q
	1	5T
	2	5V
	3	6U
	5	6T
	100	2W
	101	3W
	102	2W
	103	3W
	303	4V
	350A	3U
	350B	3U
	351A	3V
	351B	3V
	500	5R
	600	4S
	601	3S
	602	3T
	603	3T
	604	3T
	605	3T
	606	3T
	607	3T
	610	6W
	611	6W
	612	6R
	614	6Q
	615	6Q
	618	6W
	620	6W
	621	5W
	622	5W
	624	5W
	625	5W

# PC BOARD (COMPONENT SIDE VIEW)

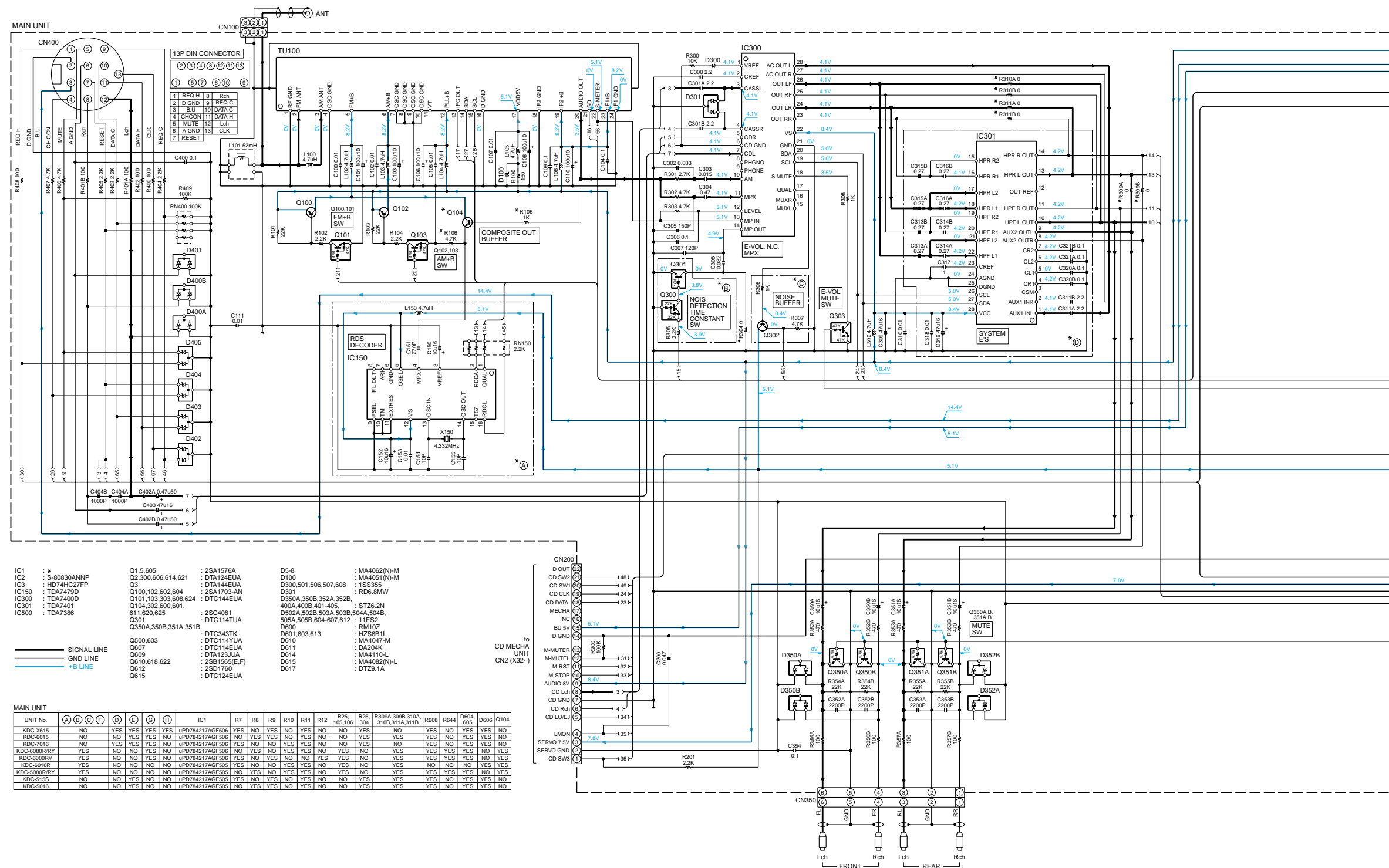
# (FOIL SIDE VIEW)



IC	1	2	4	5	6	
address	5AA	5AB	2AC	3AC	4AC	
Q	1	2	3	4	5	8
address	5Z	5AC	3AC	4AB	5AC	5AB

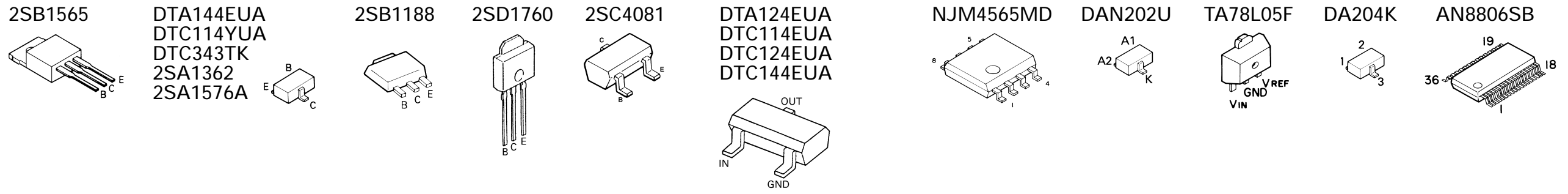
IC	1	2	4	5	6	
address	5AH	5AG	2AF	3AF	4AF	
Q	1	2	3	4	5	8
address	5AI	5AF	3AF	4AG	5AF	5AG

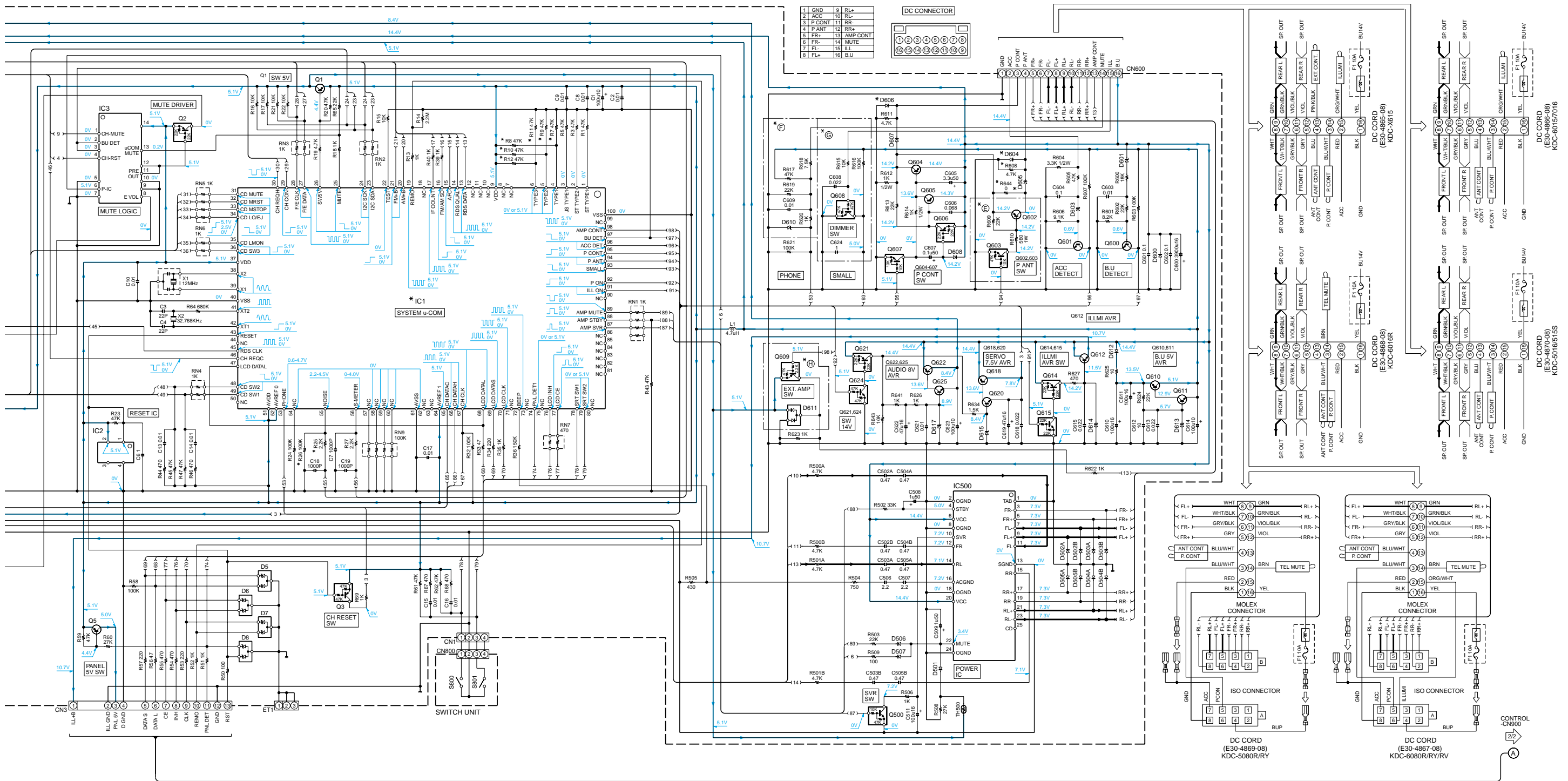




- IC1 : \*  
 IC2 : S-80830ANPP  
 IC3 : HD74HC27FP  
 IC150 : TDA7470D  
 IC300 : TDA7400D  
 IC301 : TDA7401  
 IC500 : TDA7386
- Q1,5,605 : 2SA1576A  
 Q2,300,606,614,621 : DTA124EUA  
 Q3 : DTA144EUA  
 Q100,102,602,604 : 2SA1703-AN  
 Q101,103,303,608,624 : DTC144EUA  
 Q104,302,600,601,611,620,625 : 2SC4081  
 Q301 : Q350A,350B,351A,351B  
 Q500,603 : DTC343TK  
 Q607 : DTC114YUA  
 Q609 : DTA123JUA  
 Q610,618,622 : 2SB1565(E,F)  
 Q612 : 2SD1760  
 Q615 : DTC124EUA
- D5-8 : MA4062(N)-M  
 D100 : MA4051(N)-M  
 D300,501,506,507,608 : 1SS355  
 D301 : RD6.8MW  
 D350A,350B,352A,352B,400A,400B,401-405,502A,502B,503A,503B,504A,504B,505A,505B,604-607,612 : STZ6.2N  
 D600 : RM10Z  
 D601,603,613 : HZS681L  
 D610 : MA4047-M  
 D611 : DA204K  
 D614 : MA4110-L  
 D615 : MA4082(N)-L  
 D617 : DTZ9.1A

MAIN UNIT		IC1																			
UNIT No.	(A)	(B)	(C)	(D)	(E)	(H)	R7	R8	R9	R10	R11	R12	R25, 105,106	R26, 304	R300A,300B,310A,310B,311A,311B	R608	R644	D504, 605	D606	Q104	
KDC-5615	NO	YES	YES	YES	YES	YES	NO	YES	NO	YES	NO	NO	NO	NO	NO	YES	NO	YES	YES	NO	NO
KDC-6015	NO	NO	YES	YES	NO	NO	NO	YES	YES	NO	NO	NO	NO	NO	NO	YES	YES	NO	NO	YES	NO
KDC-7216	NO	YES	YES	YES	NO	NO	NO	NO	NO	NO	NO	NO	NO	NO	NO	NO	NO	NO	NO	NO	NO
KDC-6080R/RV	YES	NO	NO	YES	NO	NO	NO	NO	NO	YES	NO	NO	NO	NO	NO	YES	YES	YES	YES	NO	YES
KDC-6080RV	YES	NO	NO	YES	NO	NO	NO	NO	NO	NO	NO	NO	NO	NO	NO	NO	NO	NO	NO	NO	NO
KDC-6016R	YES	NO	NO	NO	NO	NO	NO	NO	NO	NO	NO	NO	NO	NO	NO	NO	NO	NO	NO	NO	NO
KDC-5080R/RV	YES	NO	NO	NO	NO	NO	NO	NO	NO	NO	NO	NO	NO	NO	NO	NO	NO	NO	NO	NO	NO
KDC-515S	NO	NO	YES	NO	NO	NO	NO	NO	NO	NO	NO	NO	NO	NO	NO	NO	NO	NO	NO	NO	NO
KDC-5016	NO	NO	YES	NO	NO	NO	NO	NO	NO	NO	NO	NO	NO	NO	NO	NO	NO	NO	NO	NO	NO

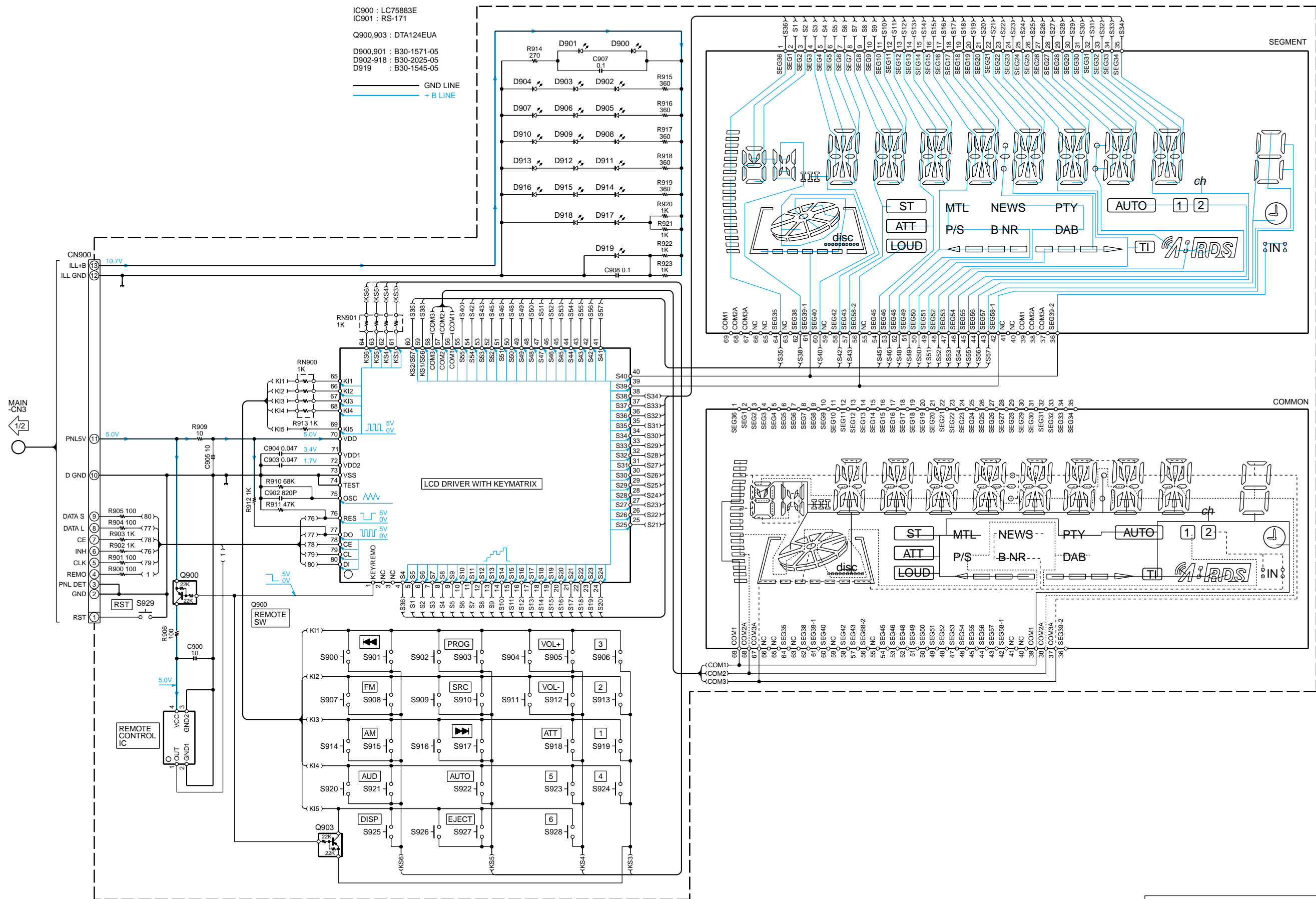




**CAUTION:** For continued safety, replace safety critical components only with manufacturer's recommended parts (refer to parts list).  
 ⚠ Indicates safety critical components. To reduce the risk of electric shock, leakage-current or resistance measurements shall be carried out (exposed parts are acceptably insulated from the supply circuit) before the appliance is returned to the customer.  
 • DC voltages are as measured with a high impedance voltmeter. Values may vary slightly due to variations between individual instruments or/and units.

IC900 : LC75883E  
 IC901 : RS-171  
 Q900,903 : DTA124EUA  
 D900,901 : B30-1571-05  
 D902-918 : B30-2025-05  
 D919 : B30-1545-05

— GND LINE  
 — + B LINE

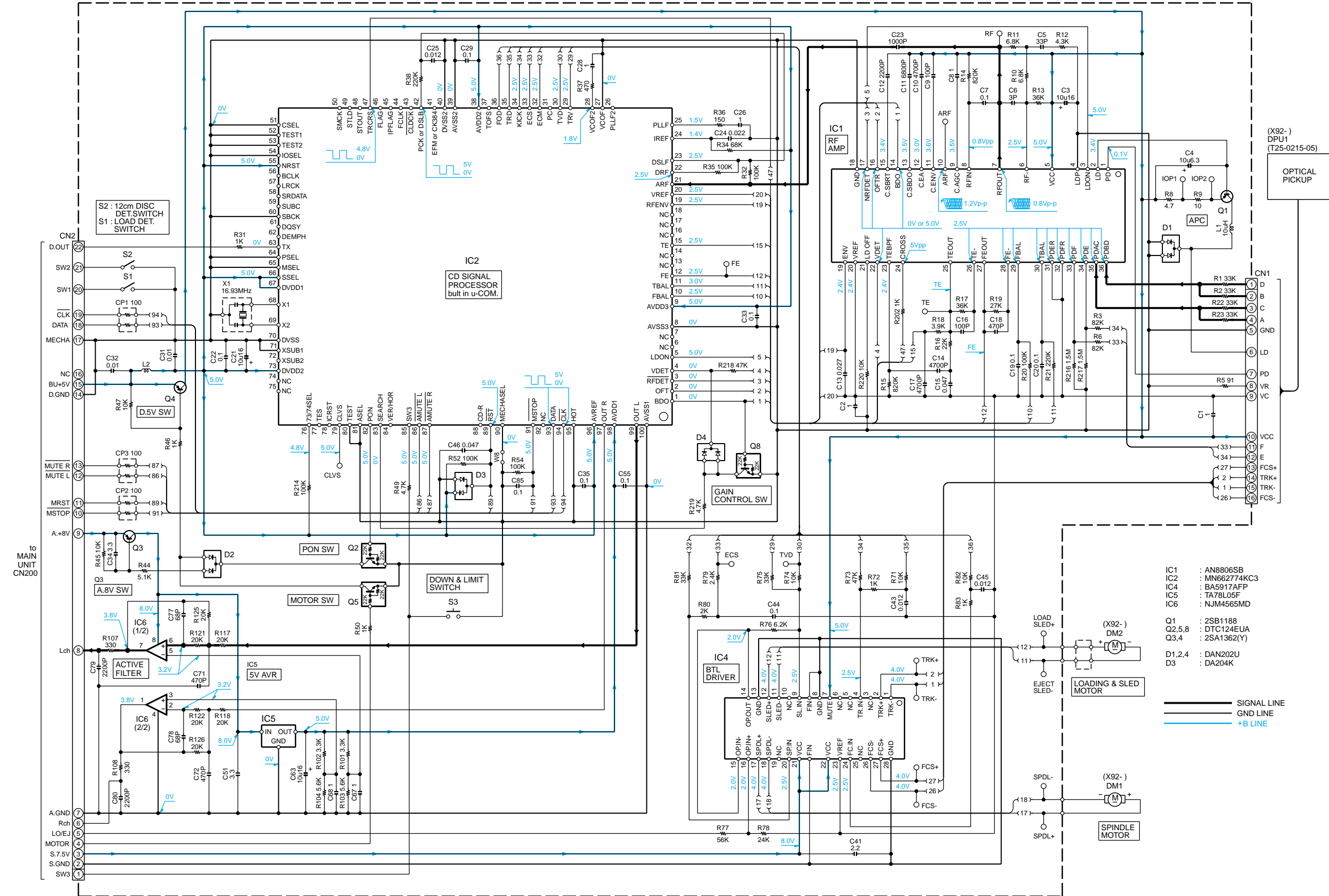


**CAUTION:** For continued safety, replace safety critical components only with manufacturer's recommended parts (refer to parts list).  
 ⚠ Indicates safety critical components. To reduce the risk of electric shock, leakage-current or resistance measurements shall be carried out (exposed parts are acceptably insulated from the supply circuit) before the appliance is returned to the customer.  
 • DC voltages are as measured with a high impedance voltmeter. Values may vary slightly due to variations between individual instruments or/and units.

**KDC-5016,515S**  
**KENWOOD**



X32-4700-00 : (DXM-1040)



- IC1 : AN8806SB
- IC2 : MN662774KC3
- IC4 : BA5917AFP
- IC5 : TA78L05F
- IC6 : NJM4565MD
- Q1 : 2SB1188
- Q2,5,8 : DTC124EUA
- Q3,4 : 2SA1362(Y)
- D1,2,4 : DAN202U
- D3 : DA204K

— SIGNAL LINE  
 — GND LINE  
 — +B LINE

**CAUTION:** For continued safety, replace safety critical components only with manufacturer's recommended parts (refer to parts list).  
 ⚠ Indicates safety critical components. To reduce the risk of electric shock, leakage-current or resistance measurements shall be carried out (exposed parts are acceptably insulated from the supply circuit) before the appliance is returned to the customer.  
 • DC voltages are as measured with a high impedance voltmeter. Values may vary slightly due to variations between individual instruments or/and units.

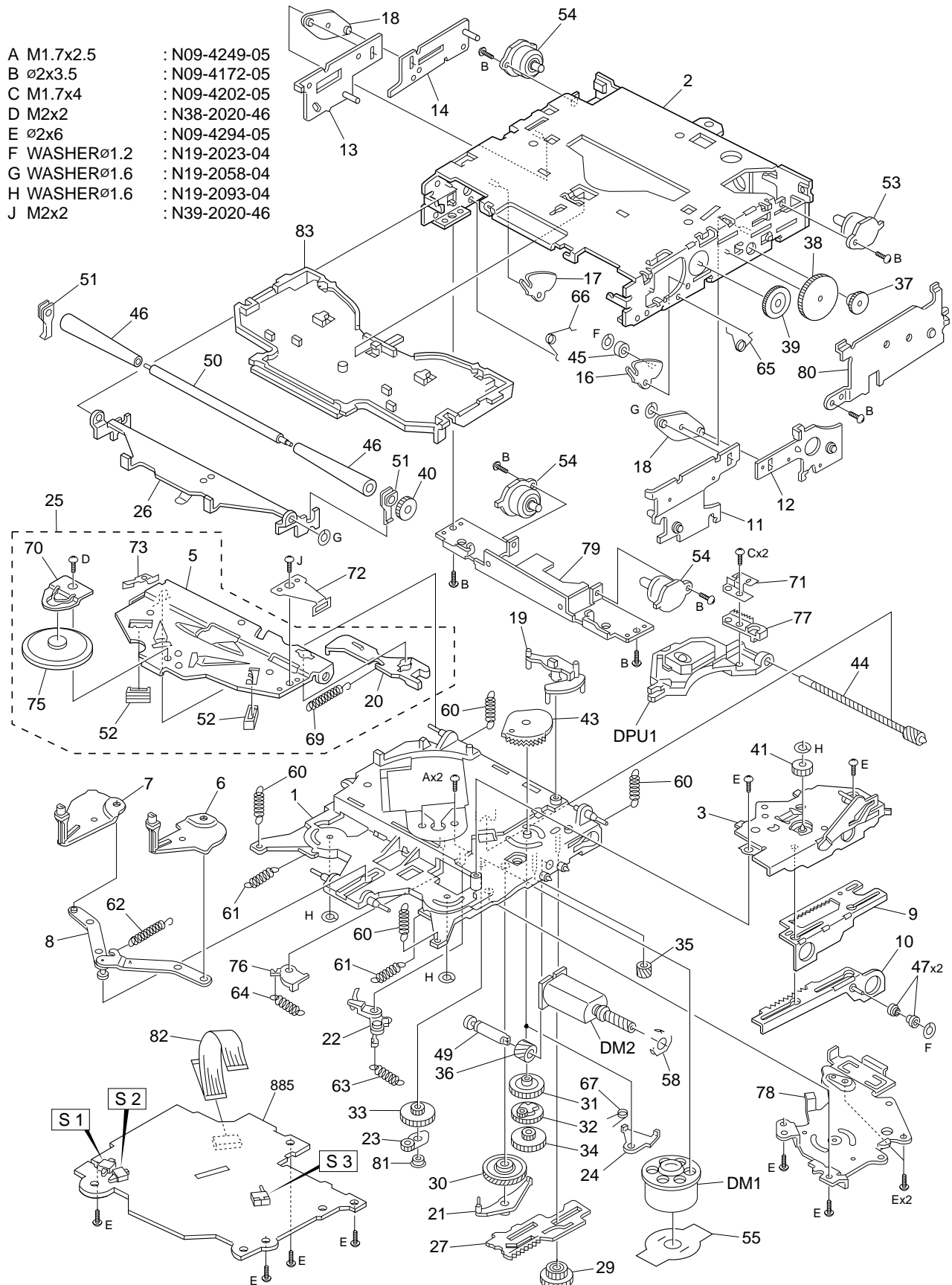
# KDC-5016,515S

KENWOOD

# KDC-5016,515S

## EXPLODED VIEW (MECHANISM)

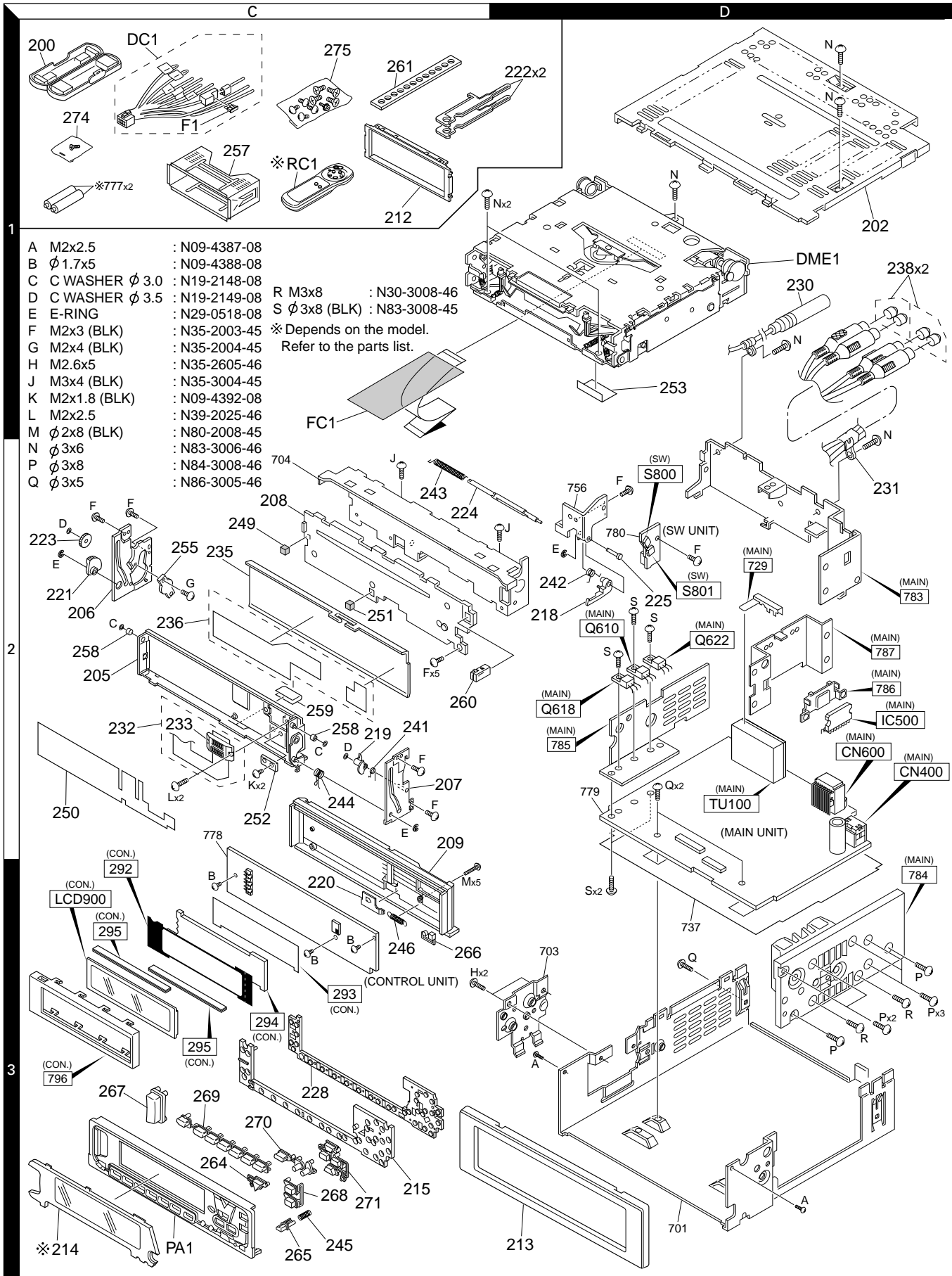
A	M1.7x2.5	: N09-4249-05
B	∅2x3.5	: N09-4172-05
C	M1.7x4	: N09-4202-05
D	M2x2	: N38-2020-46
E	∅2x6	: N09-4294-05
F	WASHER∅1.2	: N19-2023-04
G	WASHER∅1.6	: N19-2058-04
H	WASHER∅1.6	: N19-2093-04
J	M2x2	: N39-2020-46



Parts with the exploded numbers larger than 700 are not supplied.

# KDC-5016,515S

## EXPLODED VIEW (UNIT)



# KDC-5016,515S

## PARTS LIST

\*New Parts

Parts without Parts No. are not supplied.

Les articles non mentionnes dans le Parts No. ne sont pas fournis.

Teile ohne Parts No. werden nicht geliefert.

Ref. No.	A	N	Parts No.	Description	Dest
	d	e			inati
					on
<b>KDC-5016,515S</b>					
200	1C	*	A02-1494-08	PLASTIC CABINET ASSY	
202	1D	*	A52-0769-08	TOP PLATE	
205	2C	*	A11-0995-08	PANEL BRACKET ASSY	
206	2C	*	A11-0996-08	SIDE PLATE L ASSY	
207	2C	*	A11-0997-08	SIDE PLATE R ASSY	
208	2C	*	A22-2846-08	SUB PANEL ASSY	
209	2C	*	A46-1674-08	REAR COVER	
PA1	3C	*	A64-2090-08	PANEL ASSY	
RC1	1C	*	A70-0883-05	REMOTO CONTROLLER ASSY(RC-500)	M3
212	1C	*	B07-2186-08	ESCUTCHEON (J-CAR)	
213	3D	*	B07-2195-08	ESCUTCHEON ASSY	
214	3C	*	B10-3216-08	FRONT GLASS ASSY	K2
214	3C	*	B10-3217-08	FRONT GLASS ASSY	M3
215	3C	*	B19-2041-08	HOLDER	
-			B46-0100-50	WARRANTY CARD	
-			B46-0612-14	ID CARD	
-			B58-1344-04	CAUTION CARD	K2
-		*	B64-1625-00	INST.MANUAL(ENG,FRE,SRA)	K2
-		*	B64-1626-00	INST.MANUAL(ENG,CHI)	M3
218	2D	*	D10-4500-08	ARM (RELEASE)	
219	2C	*	D10-4501-08	LEVER (SW)	
220	3C	*	D10-4502-08	LEVER (LOCK)	
221	2C	*	D10-4503-08	GEAR (ARM)	
222	1D	*	D10-4514-08	LEVER	
223	2C	*	D13-2088-08	GEAR (IDOL)	
224	2C	*	D14-0745-08	ROLLER (FPC)	
225	2D	*	D21-2351-08	SHAFT (RELEASE H)	
228	3C	*	E29-1807-08	CONDUCTIVE RUBBER	
230	1D	*	E30-4857-08	ANT CORD ASSY	
231	2D	*	E30-4859-08	RCA CORD ASSY	
232	2C	*	E39-0360-08	FPC ASSY	
233	2C	*	E58-0895-05	RECTANGULAR RECEPTACLE (13P)	
DC1	1C	*	E30-4870-08	DC CORD	
FC1	1C	*	E39-0359-08	FLAT CABLE (22P)	
235	2C	*	F07-1089-08	COVER (MASK)	
236	2C	*	F09-1637-08	ADHESIVE SHEET (MASK)	
238	1D	*	F29-0049-05	INSULATING COVER (RCA PIN)	
△ F1	1C		F06-1032-05	FUSE(BLADE TYPE)(10A)	
241	2C	*	G01-3030-08	TORSION COIL SPRING (SW LEVER)	
242	2D	*	G01-3031-08	TORSION COIL SPRING (RELEASE)	
243	2C	*	G01-3032-08	TORSION COIL SPRING (FPC)	
244	2C	*	G01-3033-08	TORSION COIL SPRING (BRACKET)	
245	3C	*	G01-3034-08	COMPRESSION SPRING (OPEN)	
246	3C	*	G01-3035-08	EXTENSION SPRING (LOCK LEVER)	
249	2C	*	G13-1248-08	CUSHION (BRACKET LEFT)	
250	2C	*	G16-1154-08	PROTECTION SHEET(BRACKET ASSY)	
251	2C	*	H12-2671-08	CUSHION (BRACKET MIDDLE)	
252	2C	*	H13-1782-08	FPC PROTECT COVER	
253	1D	*	H21-1127-08	PROTECTION SHEET (CD&FPC)	
-		*	H10-4714-08	POLYSTYRENE FORMED FIXTURE	
-		*	H10-4723-08	POLYSTYRENE FORMED FIXTURE (J)	

Ref. No.	A	N	Parts No.	Description	Dest
	d	e			inati
					on
-			H25-0329-04	PROTECTION BAG	
-			H25-0334-04	PROTECTION BAG	
-			H25-0336-04	PROTECTION BAG	
-		*	H54-1726-08	ITEM CARTON CASE	K2
-		*	H54-1727-08	ITEM CARTON CASE	M3
255	2C	*	J19-5023-08	DUMPER	
257	1C	*	J21-9585-08	MOUNTING HARDWARE ASSY	
258	2C	*	J31-1048-08	COLLER	
259	2C	*	J39-0841-08	PROTECTION SHEET (BRACKET ARM)	
260	2C	*	J52-0604-05	PUSH LATCH	
261	1C		J54-0611-08	STAY	
264	3C	*	K24-3591-08	KNOB (SRC)	
265	3C	*	K24-3592-08	KNOB (OPEN)	
266	3C	*	K24-3630-08	KNOB (RELEASE)	
267	3C	*	K25-1152-08	KNOB (VOL)	
268	3C	*	K25-1153-08	KNOB (PLAY/PAUSE,EJECT)	
269	3C	*	K25-1154-08	KNOB (PRESET,ATT)	
270	3C	*	K25-1155-08	KNOB (AUD,AUTO,DISP)	
271	3C	*	K25-1156-08	KNOB (FM,AM,UP,DOWN)	
274	1C	*	N99-1688-08	SCREW SET	
275	1C	*	N99-1689-08	SCREW SET	
A	3D	*	N09-4387-08	SCREW	
B	3C	*	N09-4388-08	SCREW	
C	2C	*	N19-2148-08	C WASHER	
D	2C	*	N19-2149-08	C WASHER	
E	2C	*	N29-0518-08	E RING	
F	2C		N35-2003-45	SCREW	
G	2C		N35-2004-45	SCREW	
H	3C		N35-2605-46	SCREW	
J	2C		N35-3004-45	SCREW	
K	2C	*	N09-4392-08	SCREW	
L	2C		N39-2025-46	SCREW	
M	3C		N80-2008-45	SCREW	
N	1D		N83-3006-46	SCREW	
P	3C		N84-3008-46	SCREW	
Q	2D		N86-3005-46	SCREW	
DME1	1D		X92-3690-01	CD MECHANISM ASSY	
<b>MAIN UNIT</b>					
C1			CE04CW1A101M	ELECTRO 100UF 10WV	
C2			CK73GB1H103K	CHIP C 0.010UF K	
C3 ,4			CC73FCH1H220J	CHIP C 22PF J	
C6			CK73EB1C105K	CHIP C 1.0UF K	
C7			CK73GB1H102K	CHIP C 1000PF K	
C8 -10			CK73GB1H103K	CHIP C 0.010UF K	
C13 -17			CK73GB1H103K	CHIP C 0.010UF K	
C18 ,19			CK73GB1H102K	CHIP C 1000PF K	
C100			CK73GB1H103K	CHIP C 0.010UF K	
C101			CE04CW1A101M	ELECTRO 100UF 10WV	
C102			CK73GB1H103K	CHIP C 0.010UF K	
C103			CE04CW1A101M	ELECTRO 100UF 10WV	
C104			CK73GB1C104K	CHIP C 0.10UF K	
C105			CK73GB1H103K	CHIP C 0.010UF K	
C106			CE04CW1A101M	ELECTRO 100UF 10WV	

K2:KDC-515S M3:KDC-5016

△ indicates safety critical components.

# KDC-5016,515S

## PARTS LIST

\*New Parts

Parts without Parts No. are not supplied.

Les articles non mentionnes dans le Parts No. ne sont pas fournis.

Teile ohne Parts No. werden nicht geliefert.

MAIN UNIT

Ref. No.	Added	New	Parts No.	Description	Destination
C107			CK73GB1H103K	CHIP C 0.010UF K	
C108			CE04CW1A101M	ELECTRO 100UF 10WV	
C109			CK73GB1C104K	CHIP C 0.10UF K	
C110			CE04CW1A101M	ELECTRO 100UF 10WV	
C111			CK73GB1H103K	CHIP C 0.010UF K	
C200		*	C90-5325-08	CHIP C 0.047UF K	
C300			CK73EB1C225K	CHIP C 2.2UF K	
C301A,B			CK73EB1C225K	CHIP C 2.2UF K	
C302		*	C90-5326-08	CHIP C 0.033UF K	
C303			CK73GB1H153K	CHIP C 0.015UF K	
C304			CK73FB1C474K	CHIP C 0.47UF K	
C305			CC73FCH1H151J	CHIP C 150PF J	
C306			CK73GB1C104K	CHIP C 0.10UF K	
C307			CC73FCH1H121J	CHIP C 120PF J	
C308			CK73GB1C823K	CHIP C 0.082UF K	
C309			CE04CW1C470M	ELECTRO 47UF 16WV	
C310			CK73GB1H103K	CHIP C 0.010UF K	
C350A,B			C90-2597-05	ELECTRO 10UF 16WV	
C351A,B			C90-2597-05	ELECTRO 10UF 16WV	
C352A,B			CK73GB1H222K	CHIP C 2200PF K	
C353A,B			CK73GB1H222K	CHIP C 2200PF K	
C354			CK73FB1E104K	CHIP C 0.10UF K	
C400			CK73FB1E104K	CHIP C 0.10UF K	
C402A,B			C90-2606-05	ELECTRO 0.47UF 50WV	
C403			CE04CW1C470M	ELECTRO 47UF 16WV	
C404A,B			CK73GB1H102K	CHIP C 1000PF K	
C502A,B			CK73FB1C474K	CHIP C 0.47UF K	
C503A,B			CK73FB1C474K	CHIP C 0.47UF K	
C504A,B			CK73FB1C474K	CHIP C 0.47UF K	
C505A,B			CK73FB1C474K	CHIP C 0.47UF K	
C506,507			CK73EB1C225K	CHIP C 2.2UF K	
C508,509			C90-2877-08	ELECTRO 1.0UF 50WV	
C511			CE04CW1C101M	ELECTRO 100UF 16WV	
C600		*	C90-5328-08	ELECTRO 3900UF 16WV	
C601			CK73EB1H104K	CHIP C 0.10UF K	
C602			CK73FB1E104K	CHIP C 0.10UF K	
C603			CK73FB1H103K	CHIP C 0.010UF K	
C604			CK73FB1E104K	CHIP C 0.10UF K	
C605			CE04CW1H3R3M	ELECTRO 3.3UF 50WV	
C606			CK73FB1E683K	CHIP C 0.068UF K	
C607			CE04CW1H0R1M	ELECTRO 0.1UF 50WV	
C610,611			CE04CW1C101M	ELECTRO 100UF 16WV	
C612		*	C90-5327-08	CHIP-TAN 10UF 16WV	
C613			CK73GB1H223K	CHIP C 0.022UF K	
C614			CE04CW1A101M	ELECTRO 100UF 10WV	
C615			CK73GB1H223K	CHIP C 0.022UF K	
C618			CK73GB1H223K	CHIP C 0.022UF K	
C619			CE04CW1C470M	ELECTRO 47UF 16WV	
C621			CK73GB1H103K	CHIP C 0.010UF K	
C622			CE04CW1C470M	ELECTRO 47UF 16WV	
C623			CE04CW1A101M	ELECTRO 100UF 10WV	
CN1		*	E41-0068-08	PIN ASSY (4P)	
CN3			E40-9402-05	FLAT CABLE CONNECTOR (13P)	
CN100			E40-3238-05	PIN ASSY (3P)	

Ref. No.	Added	New	Parts No.	Description	Destination
CN200			E40-9339-05	FLAT CABLE CONNECTOR (22P)	
CN350			E40-3241-05	PIN ASSY (6P)	
CN400	2D		E56-0834-05	CYLINDRICAL RECEPTACLE (13P)	
CN600	2D		E58-0863-15	RECTANGULAR RECEPTACLE (16P)	
L1			L33-1055-08	SMALL FIXED INDUCTOR(4.7UH,K)	
L100			L33-1055-08	SMALL FIXED INDUCTOR(4.7UH,K)	
L101			L33-1123-05	LINE FILTER COIL (ANT COIL)	
L102-106			L33-1055-08	SMALL FIXED INDUCTOR(4.7UH,K)	
L300			L33-1055-08	SMALL FIXED INDUCTOR(4.7UH,K)	
X1		*	L78-0815-08	SERAMIC RESONATOR (12.0MHZ)	
X2			L78-0533-05	RESONATOR (32.768KHZ)	
P	3D		N84-3008-46	SCREW	
R	3D		N30-3008-46	SCREW	
S	2D		N83-3008-45	SCREW	
JC1			R92-2053-05	CHIP R 0 J 1/8W	
JC2			R92-2052-05	CHIP R 0 J 1/10W	
JC3, 4			R92-2053-05	CHIP R 0 J 1/8W	
JC5-7			R92-2052-05	CHIP R 0 J 1/10W	
JC8-10			R92-2053-05	CHIP R 0 J 1/8W	
JC11-13			R92-2052-05	CHIP R 0 J 1/10W	
JC14			R92-2053-05	CHIP R 0 J 1/8W	
JC15,16			R92-2052-05	CHIP R 0 J 1/10W	
JC17			R92-2053-05	CHIP R 0 J 1/8W	
JC18,19			R92-2052-05	CHIP R 0 J 1/10W	
R1			RK73GB1J473J	CHIP R 47K J 1/16W	
R3			RK73GB1J473J	CHIP R 47K J 1/16W	
R5			RK73GB1J473J	CHIP R 47K J 1/16W	
R7			RK73GB1J473J	CHIP R 47K J 1/16W	
R8			RK73GB1J473J	CHIP R 47K J 1/16W	K2 M3
R9			RK73GB1J473J	CHIP R 47K J 1/16W	
R11			RK73GB1J473J	CHIP R 47K J 1/16W	
R13			RK73FB2A102J	CHIP R 1.0K J 1/10W	
R14			RK73EB2B225J	CHIP R 2.2M J 1/8W	
R15-17			RK73FB2A103J	CHIP R 10K J 1/10W	
R18			RK73FB2A102J	CHIP R 1.0K J 1/10W	
R19			RK73FB2A472J	CHIP R 4.7K J 1/10W	
R20			RK73FB2A473J	CHIP R 47K J 1/10W	
R21, 22			RK73FB2A103J	CHIP R 10K J 1/10W	
R23			RK73FB2A473J	CHIP R 47K J 1/10W	
R24			RK73FB2A104J	CHIP R 100K J 1/10W	
R26			RK73FB2A104J	CHIP R 100K J 1/10W	
R27			RK73FB2A222J	CHIP R 2.2K J 1/10W	
R32			RK73FB2A104J	CHIP R 100K J 1/10W	
R33			RK73FB2A470J	CHIP R 47 J 1/10W	
R34			RK73FB2A221J	CHIP R 220 J 1/10W	
R35			RK73FB2A102J	CHIP R 1.0K J 1/10W	
R36			RK73FB2A154J	CHIP R 150K J 1/10W	
R39, 40			RK73FB2A102J	CHIP R 1.0K J 1/10W	
R43			RK73FB2A473J	CHIP R 47K J 1/10W	
R44			RK73FB2A471J	CHIP R 470 J 1/10W	
R45			RK73FB2A473J	CHIP R 47K J 1/10W	
R46			RK73FB2A471J	CHIP R 470 J 1/10W	
R47			RK73FB2A473J	CHIP R 47K J 1/10W	
R50			RK73FB2A101J	CHIP R 100 J 1/10W	

K2:KDC-515S M3:KDC-5016

# KDC-5016,515S

## PARTS LIST

\*New Parts

Parts without Parts No. are not supplied.

Les articles non mentionnes dans le Parts No. ne sont pas fournis.

Teile ohne Parts No. werden nicht geliefert.

### MAIN UNIT

Ref. No.	Added	New	Parts No.	Description	Destination	Ref. No.	Added	New	Parts No.	Description	Destination
R51,52			RK73FB2A102J	CHIP R 1.0K J 1/10W		R605			RK73EB2B473J	CHIP R 47K J 1/8W	
R53			RK73FB2A221J	CHIP R 220 J 1/10W		R606			RK73FB2A912J	CHIP R 9.1K J 1/10W	
R54,55			RK73FB2A471J	CHIP R 470 J 1/10W		R607			RK73FB2A104J	CHIP R 100K J 1/10W	
R56			RK73FB2A470J	CHIP R 47 J 1/10W		R608			RK73FB2A472J	CHIP R 4.7K J 1/10W	
R57			RK73FB2A221J	CHIP R 220 J 1/10W		R609			RK73FB2A223J	CHIP R 22K J 1/10W	
R58			RK73FB2A104J	CHIP R 100K J 1/10W		R610			RS14AB3A561J	FL-PROOF RS 560 J 1W	
R59			RK73FB2A473J	CHIP R 47K J 1/10W		R611			RK73FB2A472J	CHIP R 4.7K J 1/10W	
R60			RK73FB2A273J	CHIP R 27K J 1/10W		R612			RD14DB2H102J	SMALL-RD 1.0K J 1/2W	
R61,62			RK73FB2A473J	CHIP R 47K J 1/10W		R613			RK73FB2A223J	CHIP R 22K J 1/10W	
R64			RK73FB2A684J	CHIP R 680K J 1/10W		R614			RD14DB2H102J	SMALL-RD 1.0K J 1/2W	
R65			RK73FB2A223J	CHIP R 22K J 1/10W		R621			RK73FB2A104J	CHIP R 100K J 1/10W	
R67,68			RK73FB2A471J	CHIP R 470 J 1/10W		R622,623			RK73FB2A102J	CHIP R 1.0K J 1/10W	
R69			RK73FB2A102J	CHIP R 1.0K J 1/10W		R624			RK73FB2A223J	CHIP R 22K J 1/10W	
R100			RK73EB2B151J	CHIP R 150 J 1/8W		R625			RD14BB2E100J	RD 10 J 1/4W	
R101			RK73FB2A223J	CHIP R 22K J 1/10W		R626			RK73FB2A102J	CHIP R 1.0K J 1/10W	
R102			RK73EB2B222J	CHIP R 2.2K J 1/8W		R627			RK73FB2A471J	CHIP R 470 J 1/10W	
R103			RK73FB2A223J	CHIP R 22K J 1/10W		R634			RK73FB2A152J	CHIP R 1.5K J 1/10W	
R104			RK73EB2B222J	CHIP R 2.2K J 1/8W		R641			RK73FB2A102J	CHIP R 1.0K J 1/10W	
R200			RK73FB2A104J	CHIP R 100K J 1/10W		R643			RK73FB2A103J	CHIP R 10K J 1/10W	
R201			RK73FB2A222J	CHIP R 2.2K J 1/10W		RN1			R90-0724-05	MULTI-COMP 1K X4	
R300			RK73FB2A103J	CHIP R 10K J 1/10W		RN2 -4			R90-0725-05	MULTI-COMP 1K X2	
R301			RK73FB2A272J	CHIP R 2.7K J 1/10W		RN5			R90-0724-05	MULTI-COMP 1K X4	
R302,303			RK73FB2A472J	CHIP R 4.7K J 1/10W		RN6			R90-0725-05	MULTI-COMP 1K X2	
R304			R92-2052-05	CHIP R 0 J 1/10W		RN7			R90-1022-05	MULTI-COMP 470 X2	
R308			RK73FB2A102J	CHIP R 1.0K J 1/10W		RN9			R90-0720-05	MULTI-COMP 100K X4	
R309A,B			R92-2052-05	CHIP R 0 J 1/10W		RN400			R90-0720-05	MULTI-COMP 100K X4	
R310A,B			R92-2052-05	CHIP R 0 J 1/10W		D5 -8			MA4062(N)-M	ZENER DIODE	
R311A,B			R92-2052-05	CHIP R 0 J 1/10W		D100			MA4051(N)-M	ZENER DIODE	
R352A,B			RK73FB2A471J	CHIP R 470 J 1/10W		D300			1SS355	DIODE	
R353A,B			RK73FB2A471J	CHIP R 470 J 1/10W		D301			RD6.8MW	ZENER DIODE	
R354A,B			RK73FB2A223J	CHIP R 22K J 1/10W		D350A,B			STZ6.2Z	ZENER DIODE	
R355A,B			RK73FB2A223J	CHIP R 22K J 1/10W		D352A,B			STZ6.2Z	ZENER DIODE	
R356A,B			RK73FB2A101J	CHIP R 100 J 1/10W		D400A,B			STZ6.2Z	ZENER DIODE	
R357A,B			RK73FB2A101J	CHIP R 100 J 1/10W		D401-405			STZ6.2Z	ZENER DIODE	
R400			RK73FB2A101J	CHIP R 100 J 1/10W		D501			1SS355	DIODE	
R401A,B			RK73FB2A101J	CHIP R 100 J 1/10W		D502A,B			11ES2C	DIODE	
R402			RK73FB2A101J	CHIP R 100 J 1/10W		D503A,B			11ES2C	DIODE	
R403-405			RK73FB2A222J	CHIP R 2.2K J 1/10W		D504A,B			11ES2C	DIODE	
R406,407			RK73FB2A472J	CHIP R 4.7K J 1/10W		D505A,B			11ES2C	DIODE	
R408			RK73FB2A101J	CHIP R 100 J 1/10W		D506,507			1SS355	DIODE	
R409			RK73FB2A104J	CHIP R 100K J 1/10W		D600			RM10Z	ZENER DIODE	
R500A,B			RK73FB2A472J	CHIP R 4.7K J 1/10W		D601			HZS6B1L	ZENER DIODE	
R501A,B			RK73FB2A472J	CHIP R 4.7K J 1/10W		D603			HZS6B1L	ZENER DIODE	
R502			RK73FB2A333J	CHIP R 33K J 1/10W		D604-607			11ES2C	DIODE	
R503			RK73FB2A223J	CHIP R 22K J 1/10W		D608			1SS355	DIODE	
R504			RK73FB2A751J	CHIP R 750 J 1/10W		D612			11ES2C	DIODE	
R505			RK73FB2A431J	CHIP R 430 J 1/10W		D613			HZS6B1L	ZENER DIODE	
R506			RK73FB2A102J	CHIP R 1.0K J 1/10W		D614			MA4110-L	ZENER DIODE	
R508			RK73FB2A273J	CHIP R 27K J 1/10W		D615			MA4082(N)-L	ZENER DIODE	
R509			RK73FB2A101J	CHIP R 100 J 1/10W		D617			DTZ9.1A	ZENER DIODE	
R600			RK73FB2A183J	CHIP R 18K J 1/10W		IC1		*	784217AGF505	MI-COM IC	
R601			RK73FB2A822J	CHIP R 8.2K J 1/10W		IC2			S-80830ANNP	ANALOGUE IC	
R602			RK73FB2A223J	CHIP R 22K J 1/10W		IC3			HD74HC27FP	MOS-IC	
R603			RK73FB2A104J	CHIP R 100K J 1/10W		IC300			TDA7400D	ANALOGUE IC	
R604			RD14DB2H332J	SMALL-RD 3.3K J 1/2W							

# KDC-5016,515S

## PARTS LIST

\*New Parts

Parts without **Parts No.** are not supplied.

Les articles non mentionnes dans le **Parts No.** ne sont pas fournis.

Teile ohne **Parts No.** werden nicht geliefert.

MAIN UNIT

Ref. No.	Add	New	Parts No.	Description	Destination
IC500	2D		TDA7386	ANALOG IC	
Q1			2SA1576A	TRANSISTOR	
Q2			DTA124EUA	DIGITAL TRANSISTOR	
Q3			DTA144EUA	DIGITAL TRANSISTOR	
Q5			2SA1576A	TRANSISTOR	
Q100			2SA1703-AN	TRANSISTOR	
Q101			DTC144EUA	DIGITAL TRANSISTOR	
Q102			2SA1703-AN	TRANSISTOR	
Q103			DTC144EUA	DIGITAL TRANSISTOR	
Q303			DTC144EUA	DIGITAL TRANSISTOR	
Q350A,B			DTC343TK	DIGITAL TRANSISTOR	
Q351A,B			DTC343TK	DIGITAL TRANSISTOR	
Q500			DTC114YUA	DIGITAL TRANSISTOR	
Q600,601			2SC4081	TRANSISTOR	
Q602			2SA1703-AN	TRANSISTOR	
Q603			DTC114YUA	DIGITAL TRANSISTOR	
Q604			2SA1703-AN	TRANSISTOR	
Q605			2SA1576A	TRANSISTOR	
Q606			DTA124EUA	DIGITAL TRANSISTOR	
Q607			DTC114EUA	DIGITAL TRANSISTOR	
Q610	2D		2SB1565(E,F)	TANSISTOR	
Q611			2SC4081	TRANSISTOR	
Q612			2SD1760	TRANSISTOR	
Q614			DTA124EUA	DIGITAL TRANSISTOR	
Q615			DTC124EUA	DIGITAL TRANSISTOR	
Q618	2D		2SB1565(E,F)	TANSISTOR	
Q620			2SC4081	TRANSISTOR	
Q621			DTA124EUA	DIGITAL TRANSISTOR	
Q622	2D		2SB1565(E,F)	TANSISTOR	
Q624			DTC144EUA	DIGITAL TRANSISTOR	
Q625			2SC4081	TRANSISTOR	
TH500		*	TH470	THERMISTOR	
TU100	2D		X86-3160-11	FRONT-END UNIT	
<b>SW UNIT</b>					
CN800		*	E41-0069-08	PIN ASSY (4P)	
S800,801	2D	*	S68-0850-08	PUSH SWITCH	
<b>CONTROL UNIT</b>					
292	3C	*	B11-1305-08	OPTICAL DIFFUSER	
293	3C	*	B11-1306-08	REFRECTION SHEET	
294	3C	*	B19-2040-08	LIGHTING BOARD	
D900,901			B30-1571-05	LED (WHT)	
D902-918			B30-2025-05	LED	
D919			B30-1545-05	LED	
LCD900	3C	*	B38-1047-08	LIQUID CRYSTAL	
C900		*	C90-5327-08	CHIP-TAN 10UF 16WV	
C902		*	CK73GB1H821K	CHIP C 820PF K	
C903,904		*	C90-5325-08	CHIP C 0.047UF K	
C905		*	C90-5327-08	CHIP-TAN 10UF 16WV	
C907,908		*	CK73FB1E104K	CHIP C 0.10UF K	
295	3C	*	E29-1818-08	CONDUCTIVE RUBBER	
CN900		*	E59-0833-05	RECTANGULAR RECEPTACLE (13P)	

Ref. No.	Add	New	Parts No.	Description	Destination
R900,901			RK73GB1J101J	CHIP R 100 J 1/16W	
R902,903			RK73GB1J102J	CHIP R 1.0K J 1/16W	
R904-906			RK73GB1J101J	CHIP R 100 J 1/16W	
R909			RK73GB1J100J	CHIP R 10 J 1/16W	
R910			RK73GB1J683J	CHIP R 68K J 1/16W	
R911			RK73GB1J473J	CHIP R 47K J 1/16W	
R912,913			RK73GB1J102J	CHIP R 1.0K J 1/16W	
R914			RK73EB2B271J	CHIP R 270 J 1/8W	
R915-919			RK73EB2B361J	CHIP R 360 J 1/8W	
R920-923			RK73FB2A102J	CHIP R 1.0K J 1/10W	
RN900,901			R90-0724-05	MULTI-COMP 1K X4	
IC900			LC75883E	MOS-IC	
IC901			RS-171	ANALOG IC	
Q900			DTA124EUA	DIGITAL TRANSISTOR	
Q903			DTA124EUA	DIGITAL TRANSISTOR	
<b>CD PLAYER UNIT (X32-4700-00)</b>					
C1	2		CK73FB1A105K	CHIP C 1.0UF K	
C3			C92-1359-05	CHIP-TAN 10UF 16WV	
C4			C92-0566-05	CHIP-TAN 10UF 6.3WV	
C5			CC73FCH1H330J	CHIP C 33PF J	
C6			CC73FCH1H030C	CHIP C 3.0PF C	
C7			CK73FB1C104K	CHIP C 0.10UF K	
C8			CK73FB1A105K	CHIP C 1.0UF K	
C9			CC73FCH1H101J	CHIP C 100PF J	
C10			CK73FB1H472K	CHIP C 4700PF K	
C11			CK73FB1H682K	CHIP C 6800PF K	
C12			CK73FB1H222K	CHIP C 2200PF K	
C13			CK73FB1H273K	CHIP C 0.027UF K	
C14			CK73FB1H472K	CHIP C 4700PF K	
C15			CK73FB1E473K	CHIP C 0.047UF K	
C16			CC73FCH1H101J	CHIP C 100PF J	
C17			CK73FB1H472K	CHIP C 4700PF K	
C18			CK73FB1H471K	CHIP C 470PF K	
C19	20		CK73FB1C104K	CHIP C 0.10UF K	
C21			C92-1359-05	CHIP-TAN 10UF 16WV	
C22			CK73FB1C104K	CHIP C 0.10UF K	
C23			CK73FB1H102K	CHIP C 1000PF K	
C24			CK73FB1H223K	CHIP C 0.022UF K	
C25			CK73FB1H123K	CHIP C 0.012UF K	
C26			CK73FB1A105K	CHIP C 1.0UF K	
C28			CK73FB1A105K	CHIP C 1.0UF K	
C29			CK73FB1C104K	CHIP C 0.10UF K	
C31	32		CK73FB1H103K	CHIP C 0.010UF K	
C33			CK73FB1C104K	CHIP C 0.10UF K	
C34			CK73EB1A335K	CHIP C 3.3UF K	
C35			CK73FB1C104K	CHIP C 0.10UF K	
C41			CK73EB1C225K	CHIP C 2.2UF K	
C43			CK73FB1H123K	CHIP C 0.012UF K	
C44			CK73FB1C104K	CHIP C 0.10UF K	
C45			CK73FB1H123K	CHIP C 0.012UF K	
C46			CK73FB1E473K	CHIP C 0.047UF K	
C51			CK73EB1A335K	CHIP C 3.3UF K	
C55			CK73FB1C104K	CHIP C 0.10UF K	
C63			C92-1359-05	CHIP-TAN 10UF 16WV	

# KDC-5016,515S

## PARTS LIST

\*New Parts

Parts without **Parts No.** are not supplied.

Les articles non mentionnes dans le **Parts No.** ne sont pas fournis.

Teile ohne **Parts No.** werden nicht geliefert.

### CD PLAYER UNIT (X32-4700-00)

Ref. No.	Added	New	Parts No.	Description	Destination
C67 ,68			CK73FB1A105K	CHIP C 1.0UF K	
C71 ,72			CK73FB1H471K	CHIP C 470PF K	
C77 ,78			CC73FCH1H680J	CHIP C 68PF J	
C79 ,80			C93-1044-05	CERAMIC 2200PF K	
C85			CK73FB1C104K	CHIP C 0.10UF K	
CN1			E40-9536-05	FLAT CABLE CONNECTOR (16P)	
CN2			E40-9339-05	FLAT CABLE CONNECTOR (22P)	
L1			L40-1001-78	SMALL FIXED INDUCTOR(10UH)	
L2			L92-0308-05	FERRITE CORE	
X1			L78-0572-05	RESONATOR (16.93MHZ)	
CP1 -3			R90-1019-05	MULTI-COMP 100 X2	
R1 ,2			RK73FB2A333J	CHIP R 33K J 1/10W	
R3			RK73FB2A823J	CHIP R 82K J 1/10W	
R5			RK73FB2A910J	CHIP R 91 J 1/10W	
R6			RK73FB2A823J	CHIP R 82K J 1/10W	
R8			RK73EB2B4R7J	CHIP R 4.7 J 1/8W	
R9			RK73EB2B100J	CHIP R 10 J 1/8W	
R10 ,11			RK73FB2A682J	CHIP R 6.8K J 1/10W	
R12			RK73FB2A432J	CHIP R 4.3K J 1/10W	
R13			RK73FB2A363J	CHIP R 36K J 1/10W	
R14 ,15			RK73FB2A824J	CHIP R 820K J 1/10W	
R16			RK73FB2A223J	CHIP R 22K J 1/10W	
R17			RK73FB2A363J	CHIP R 36K J 1/10W	
R18			RK73FB2A392J	CHIP R 3.9K J 1/10W	
R19			RK73FB2A273J	CHIP R 27K J 1/10W	
R20			RK73FB2A104J	CHIP R 100K J 1/10W	
R21			RK73FB2A224J	CHIP R 220K J 1/10W	
R22 ,23			RK73FB2A333J	CHIP R 33K J 1/10W	
R31			RK73FB2A102J	CHIP R 1.0K J 1/10W	
R32			RK73FB2A104J	CHIP R 100K J 1/10W	
R34			RK73FB2A683J	CHIP R 68K J 1/10W	
R35			RK73FB2A104J	CHIP R 100K J 1/10W	
R36			RK73FB2A151J	CHIP R 150 J 1/10W	
R37			RK73FB2A471J	CHIP R 470 J 1/10W	
R38			RK73FB2A224J	CHIP R 220K J 1/10W	
R44			RK73FB2A512J	CHIP R 5.1K J 1/10W	
R45			RK73FB2A103J	CHIP R 10K J 1/10W	
R46			RK73FB2A102J	CHIP R 1.0K J 1/10W	
R47			RK73FB2A103J	CHIP R 10K J 1/10W	
R49			RK73FB2A472J	CHIP R 4.7K J 1/10W	
R50			RK73FB2A102J	CHIP R 1.0K J 1/10W	
R52			RK73FB2A104J	CHIP R 100K J 1/10W	
R54			RK73FB2A104J	CHIP R 100K J 1/10W	
R71			RK73FB2A103J	CHIP R 10K J 1/10W	
R72			RK73FB2A102J	CHIP R 1.0K J 1/10W	
R73			RK73FB2A473J	CHIP R 47K J 1/10W	
R74			RK73FB2A103J	CHIP R 10K J 1/10W	
R75			RK73FB2A333J	CHIP R 33K J 1/10W	
R76			RK73FB2A622J	CHIP R 6.2K J 1/10W	
R77			RK73FB2A563J	CHIP R 56K J 1/10W	
R78			RK73FB2A243J	CHIP R 24K J 1/10W	
R79			RK73FB2A242J	CHIP R 2.4K J 1/10W	
R80			RK73FB2A202J	CHIP R 2.0K J 1/10W	
R81			RK73FB2A333J	CHIP R 33K J 1/10W	

Ref. No.	Added	New	Parts No.	Description	Destination
R82			RK73FB2A103J	CHIP R 10K J 1/10W	
R83			RK73FB2A102J	CHIP R 1.0K J 1/10W	
R101,102			RK73FB2A332J	CHIP R 3.3K J 1/10W	
R103,104			RK73FB2A562J	CHIP R 5.6K J 1/10W	
R107,108			RK73FB2A331J	CHIP R 330 J 1/10W	
R117,118			RK73FB2A203J	CHIP R 20K J 1/10W	
R121,122			RK73FB2A203J	CHIP R 20K J 1/10W	
R125,126			RK73FB2A203J	CHIP R 20K J 1/10W	
R202			RK73FB2A102J	CHIP R 1.0K J 1/10W	
R214			RK73FB2A104J	CHIP R 100K J 1/10W	
R216,217			RK73FB2A155J	CHIP R 1.5M J 1/10W	
R218			RK73FB2A473J	CHIP R 47K J 1/10W	
R219			RK73FB2A472J	CHIP R 4.7K J 1/10W	
R220			RK73FB2A103J	CHIP R 10K J 1/10W	
W8			R92-2052-05	CHIP R 0 J 1/10W	
S1 ,2			S68-0838-05	PUSH SWITCH	
S3			S68-0823-05	PUSH SWITCH	
D1 ,2			DAN202U	DIODE	
D3			DA204K	DIODE	
D4			DAN202U	DIODE	
IC1			AN8806SB	ANALOGUE IC	
IC2			MN662774KC3	MOS-IC	
IC4			BA5917AFP	ANALOGUE IC	
IC5			TA78L05F	IC(VOLTAGE REGULATOR/ +5V)	
IC6			NJM4565MD	IC(OP AMP X2)	
Q1			2SB1188	TRANSISTOR	
Q2			DTC124EUA	DIGITAL TRANSISTOR	
Q3 ,4			2SA1362(Y)	TRANSISTOR	
Q5			DTC124EUA	DIGITAL TRANSISTOR	
Q8			DTC124EUA	DIGITAL TRANSISTOR	

### CD MECHANISM ASSY (X92-3690-01)

1	2A	A10-4482-01	CHASSIS
2	1B	A10-4225-33	CHASSIS CALKING ASSY
3	2B	A11-0915-43	SUB CHASSIS CALKING ASSY
5	2A	D10-3082-13	ARM
6	2A	D10-4306-04	ARM ASSY
7	2A	D10-4305-04	ARM ASSY
8	3A	D10-3087-44	ARM ASSY
9	3B	D10-3092-03	SLIDER
10	3B	D10-3093-04	SLIDER ASSY
11	2B	D10-3095-04	SLIDER ASSY
12	2B	D10-3096-04	SLIDER ASSY
13	1A	D10-3099-24	SLIDER ASSY
14	1A	D10-3100-04	SLIDER ASSY
16	1B	D10-4004-04	LEVER ASSY
17	1B	D10-4006-04	LEVER
18	1A	D10-4007-04	LEVER
19	2B	D10-4008-14	LEVER
20	2A	D10-4009-23	ARM
21	3A	D10-4010-04	LEVER
22	3A	D10-4011-34	LEVER ASSY
23	3A	D10-4013-14	ARM ASSY
24	3B	D10-4050-04	ARM
25	3A	D10-4038-23	ARM ASSY



# KDC-5016,515S

## PARTS LIST

\*New Parts

Parts without **Parts No.** are not supplied.

Les articles non mentionnes dans le **Parts No.** ne sont pas fournis.

Teile ohne **Parts No.** werden nicht geliefert.

### CD MECHANISM ASSY (X92-3690-01)

Ref. No.	A d d	N e w	Parts No.	Description	Dest inati on
26	2A		D10-4123-24	LEVER ASSY	
27	3A		D13-1340-13	RACK (GEAR)	
29	3B		D13-1231-04	GEAR	
30	3A		D13-1240-04	GEAR	
31	3B		D13-1233-04	GEAR	
32	3B		D13-1234-14	GEAR ASSY	
33	3A		D13-1238-03	GEAR	
34	3B		D13-1232-04	GEAR	
35	3B		D13-1241-04	GEAR	
36	3A		D13-1242-04	GEAR	
37	1B		D13-1243-04	GEAR	
38	1B		D13-1244-04	GEAR	
39	1B		D13-1245-14	GEAR	
40	2A		D13-1246-04	GEAR	
41	2B		D13-1247-04	GEAR	
43	2B		D13-1249-04	GEAR ASSY	
44	2B		D13-1341-04	GEAR ASSY (LEAD SCREW)	
45	1B		D14-0668-04	ROLLER	
46	2A		D14-0670-04	ROLLER	
47	3B		D14-0674-04	ROLLER	
49	3A		D21-2228-14	SHAFT	
50	1A		D21-2229-04	SHAFT	
51	1A		D23-0925-24	RETAINER	
52	2A		D32-0614-04	STOPPER	
53	1B		D39-0223-05	DAMPER (YELLOW)	
54	2B		D39-0224-05	DAMPER (BLACK)	
55	3B		F09-1246-04	SHEET	
58	3B		F09-1266-14	SHEET	
60	2A		G01-2770-04	EXTENSION SPRING	
61	3A		G01-2771-04	EXTENSION SPRING	
62	3A		G01-2772-24	EXTENSION SPRING	
63	3A		G01-2773-14	EXTENSION SPRING	
64	3A		G01-2774-34	EXTENSION SPRING	
65	1B		G01-2775-04	TORSION COIL SPRING	
66	1B		G01-2776-14	TORSION COIL SPRING	
67	3B		G01-2777-24	TORSION COIL SPRING	
69	2A		G01-2844-04	EXTENSION SPRING	
70	2A		G02-1231-04	FLAT SPRING	
71	2B		G02-1232-24	FLAT SPRING	
72	2A		G02-1241-24	FLAT SPRING	
73	2A		G02-1248-14	FLAT SPRING	
75	2A		J11-0613-13	CLAMPER	
76	3A		J19-4678-13	HOLDER	
77	2B		J19-4679-24	HOLDER	
78	3B		J21-7684-13	MOUNTING HARDWARE	
79	2B		J21-7686-13	MOUNTING HARDWARE	
80	1B		J21-7690-03	MOUNTING HARDWARE	
81	3A		J31-1032-04	COLLAR	
82	3A		J84-0107-05	FLEXIBLE PRINTED WIRING BOARD	
83	1A		J90-0757-22	GUIDE	
A	2A		N09-4249-05	MACHINE SCREW (M1.7X2.5,LOCK)	
B	1B		N09-4172-05	TAPPING SCREW (2X3.5,CTITE)	
C	2B		N09-4202-05	STEPPED SCREW	

Ref. No.	A d d	N e w	Parts No.	Description	Dest inati on
D	2A		N38-2020-46	PAN HEAD MACHIN SCREW	
E	3A		N09-4294-05	TAPTITE SCREW (BIND P TAPTIT)	
F	3B		N19-2023-04	FLAT WASHER	
G	2A		N19-2058-04	FLAT WASHER	
H	3A		N19-2093-04	FLAT WASHER	
J	2A		N39-2020-46	PAN HEAD MACHIN SCREW	
DM1	3B		T42-0764-04	DC MOTOR ASSY	
DM2	3B		T42-0763-04	DC MOTOR ASSY	
DPU1	2B		T25-0215-05	OPTICAL PICKUP HEAD	

# KDC-5016,515S

## SPECIFICATIONS

Model		KDC-5016	KDC-515S	
FM	Frequency Range (Frequency step)	87.5MHz~108.0MHz( 50kHz) 87.9MHz~107.9MHz(200kHz)	87.9MHz~107.9MHz(200kHz)	
	Channel Space Selection	50kHz/200kHz	50kHz/200kHz	
	Usable Sensitivity (S/N 30dB)	9.3dBf (0.8μ V/75Ω)	9.3dBf (0.8μ V/75Ω)	
	Quieting Sensitivity (S/N 50dB)	15.2dBf (1.6μ V/75Ω)	15.2dBf (1.6μ V/75Ω)	
	Frequency Response (±3.0dB)	30Hz~15kHz	30Hz~15kHz	
	S/N	70dB(MONO)	70dB(MONO)	
	Selectivity	≥80dB(±400kHz)	≥80dB(±400kHz)	
	Stereo Separation	40dB(1kHz)	40dB(1kHz)	
MW (AM)	Frequency Range (Frequency step)	531kHz~1611kHz( 9kHz) 530kHz~1700kHz(10kHz)	530kHz~1700kHz(10kHz)	
	Channel Space Selection	9kHz/10kHz	9kHz/10kHz	
	Usable Sensitivity (S/N 20dB)	28dBμ (25μ V)	28dBμ (25μ V)	
CD	Laser Diode	GaAlAs(λ=780nm)	GaAlAs(λ=780nm)	
	Digital Filter(D/A)	8 Times Over Sampling	8 Times Over Sampling	
	D/A Converter	1 Bit	1 Bit	
	Spindle Speed	500~200rpm(CLV)	500~200rpm(CLV)	
	Wow & Flutter	Below Measurable Limit	Below Measurable Limit	
	Frequency Response	10Hz~20kHz(±1dB)	10Hz~20kHz(±1dB)	
	THD	0.01%(1kHz)	0.01%(1kHz)	
	S/N Ratio	93dB(1kHz)	93dB(1kHz)	
	Dynamic Range	93dB	93dB	
	Channel Separation	85dB	85dB	
Preout Level/Load		1800mV/10kΩ(CD/CD-CH)	1800mV/10kΩ(CD/CD-CH)	
Preout Impedance		≤600Ω	≤600Ω	
AMPLIFIER	Maximum Power	45Wx4	45Wx4	
	Full Bandwidth Power (at less than 1% THD)	22Wx4	22Wx4	
TONE	Bass	100Hz±10dB	100Hz±10dB	
	Treble	10kHz±10dB	10kHz±10dB	
GENERAL	Operating Voltage (11V~16V allowable)	14.4V	14.4V	
	Current Consumption	10A	10A	
	Installation Size (W) (H) (D)	182mm	182mm	7-3/16inch
		53mm	53mm	2-1/16inch
		161mm	161mm	6-5/16inch
Weight	1.8kg	1.8kg(4.0lbs)		

**KENWOOD** follows a policy of continuous advancements in development. For this reason specifications may be changed without notice.

## KENWOOD CORPORATION

14-6, Dogenzaka 1-chome, Shibuya-ku, Tokyo 150-8501 Japan

KENWOOD SERVICE CORPORATION  
P.O. BOX 22745, 2201 East Dominguez Street, Long Beach, CA90801-5745, U.S.A.

KENWOOD ELECTRONICS CANADA INC.  
6070 Kestrel Road, Mississauga, Ontario, Canada L5T 1S8

KENWOOD ELECTRONICS LATIN AMERICA S.A.  
P.O. BOX 55-2791, Piso 6, Plaza Chase, Cl. 47 y, Aquilino de la Guardia, Panama, Republic of Panama

KENWOOD ELECTRONICS BRASIL LTDA.  
Av. Moema, 170-17, Andar-Cobertura "B", Ed. Maximum Service Center, 04077-020 Moema, São Paulo-SP-Brasil

KENWOOD ELECTRONICS UK LIMITED  
Kenwood House, Dwight Road, Watford, Herts, WD1 8EB, United Kingdom

KENWOOD ELECTRONICS DEUTSCHLAND GMBH  
Rembrücker-Str. 15, 63150 Heusenstamm, Germany

KENWOOD ELECTRONICS FRANCE S.A.  
13, Boulevard Ney, 75018 Paris, France

KENWOOD ELECTRONICS BELGIUM N.V.  
Mechelsesteenweg 418, B-1930 Zaventem, Belgium

KENWOOD ELECTRONICS ITALIA S.p.A.  
Via G. Sirtori 7/9, 20129 Milano, Italy

KENWOOD IBÉRICA S.A.  
Bolivia, 239-08020 Barcelona, Spain

KENWOOD ELECTRONICS AUSTRALIA PTY. LTD. (A.C.N. 001 499 074)  
16 Giffnock Avenue, North Ryde, N.S.W. 2113, Australia

KENWOOD ELECTRONICS (HONG KONG) LTD.  
Unit 3712-3724, Level 37, Tower 1, Metroplaza, 223 Hing Fong Road, Kwai Fong, N.T., Hong Kong

KENWOOD ELECTRONICS GULF FZE  
P.O. Box 61318, Jebel Ali, Dubai, U.A.E.

KENWOOD ELECTRONICS (THAILAND) CO., LTD.  
2019 New Pechburi Road, Bangkok, Huaykwang, Bangkok, 10320 Thailand

KENWOOD ELECTRONICS SINGAPORE PTE. LTD.  
1 Genting Lane, #07-00, Kenwood Building, Singapore, 349544

KENWOOD ELECTRONICS (MALAYSIA) SDN BHD  
#4.01 Level 4, Wisma Academy Lot 4A, Jalan 19/1, 46300 Petaling Jaya, Selangor Darul Ehsan, Malaysia